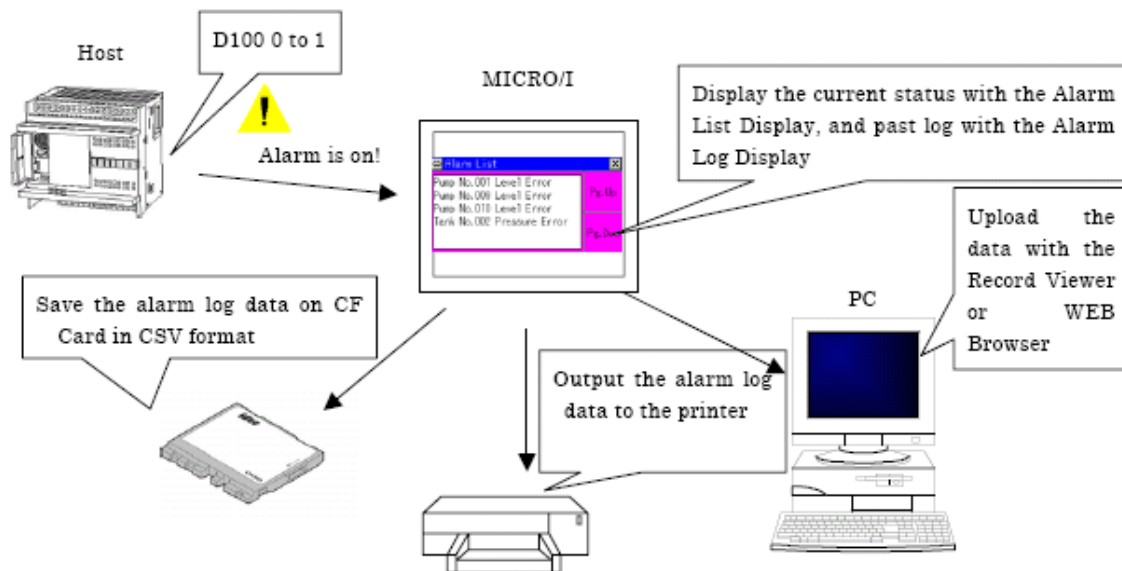


# Alarm Logging

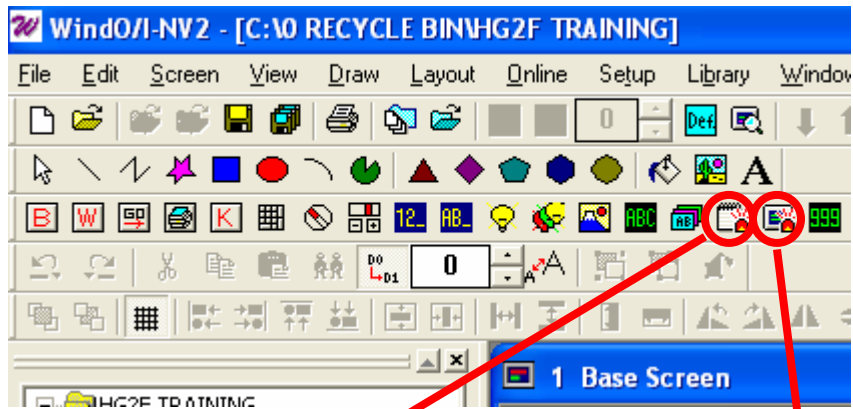
The alarm logging provides you the convenience of monitoring alarm events by displaying them on the touchscreen. With Idec's touchscreens, there are two different type of alarm logging: Alarm List and Alarm Log Display. All alarm events are displayed according to a bit change in the Device (Address). Up to 1024 alarms can be monitored.

Herewith, are other functionalities associated with the Alarm function (please see the images below).



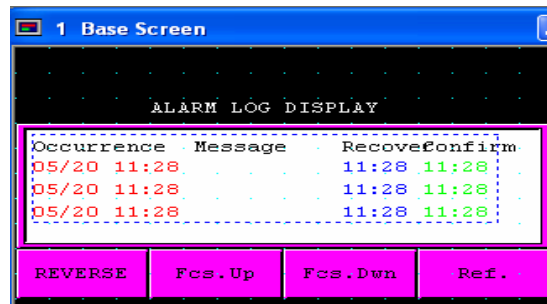
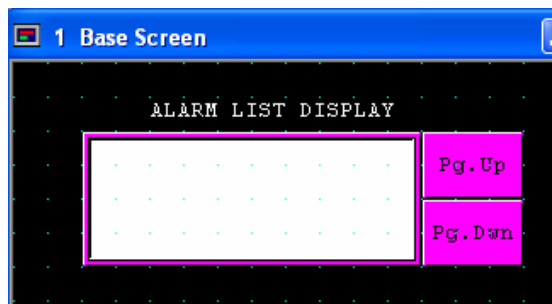
The program here will provide you a step by step configuration in creating a simple alarm screen.

## WindO/I-NV2 Software:



**1. Alarm List Display**  
(Displays Text Messages only)

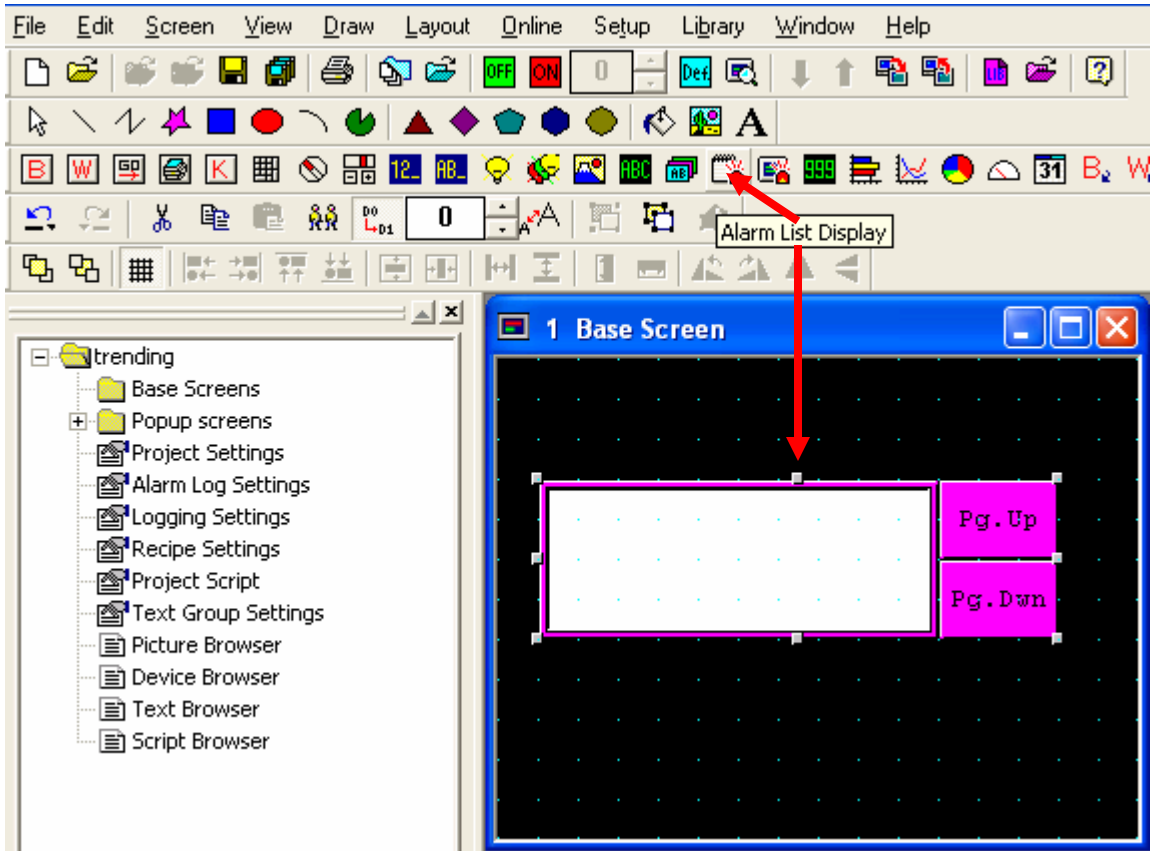
**2. Alarm Log Display**  
(Displays Text Messages, Date & Time)



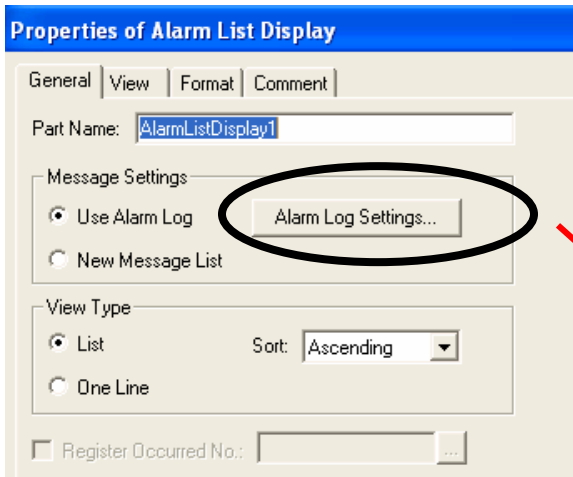
**Note:** For Alarm Log Display, start with Step #5 instruction.  
For Alarm List Display, start with Step #3 instruction.

### **3. ALARM LIST DISPLAY:**

- a) Select Alarm List Display and drop it on a Base Screen. Go to the Properties of Alarm List Display <by double clicking the part>.



4. In the Properties of Alarm List Display, click on the Alarm Log Settings button.

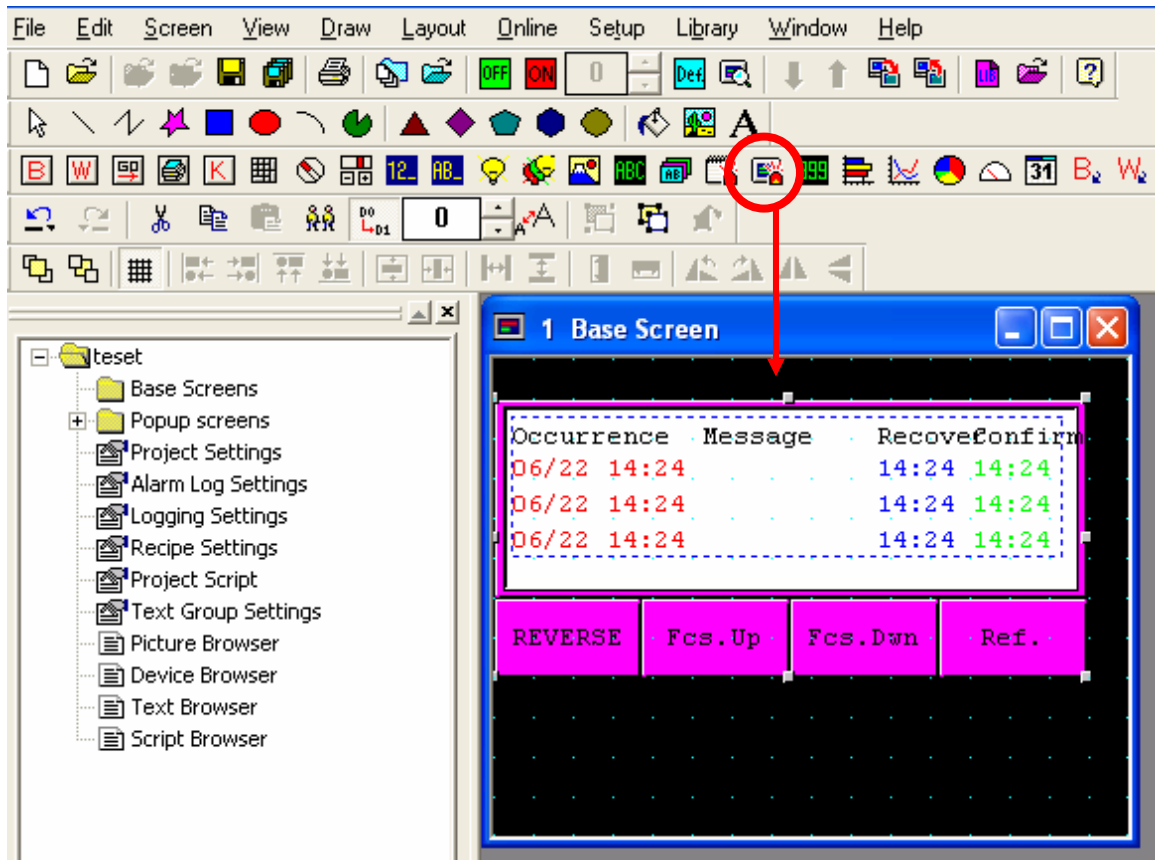


**Note: To configure Alarm Log Settings, follow**

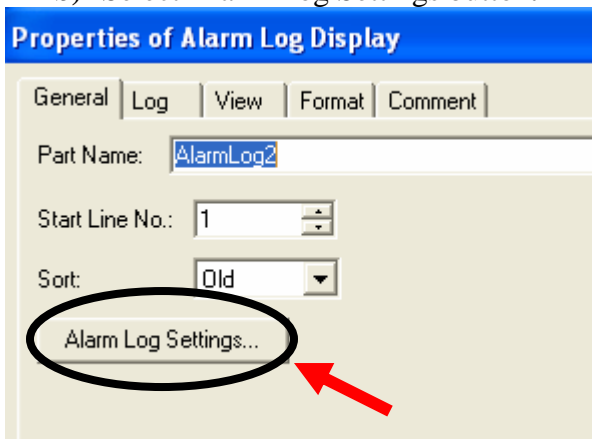
**Step # 6.**

## **5. ALARM LOG DISPLAY**

- a) Select Alarm Log Display and drop it on the Base Screen. Go to the Properties of Alarm Log Display <by double clicking on the part>.

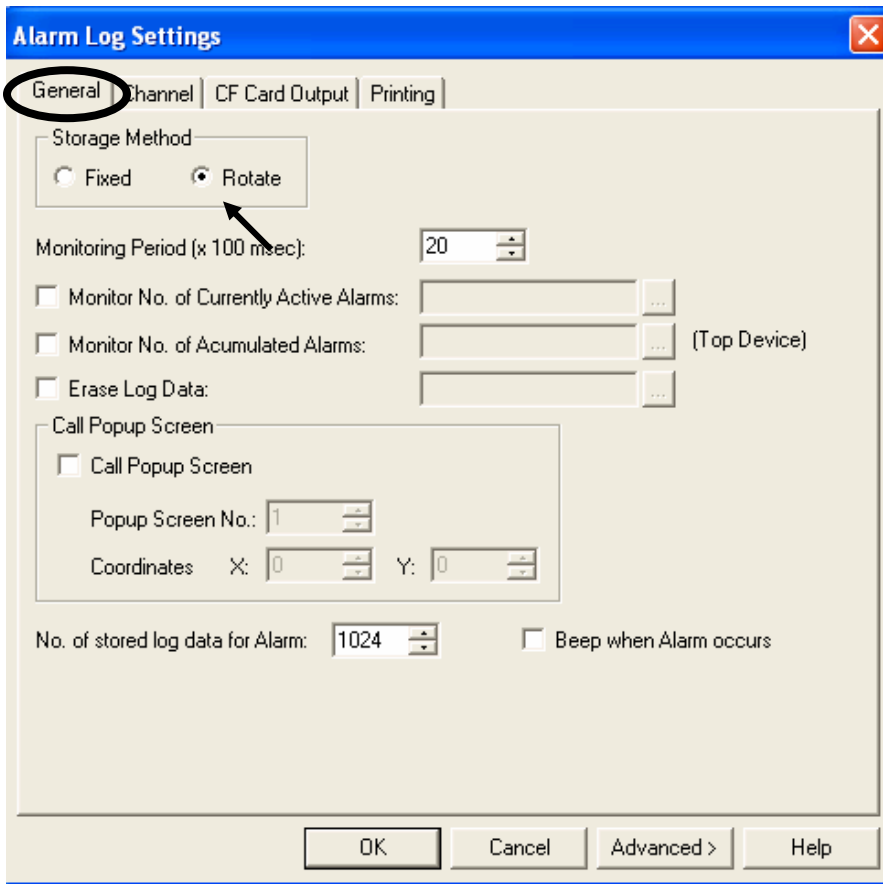


b) Select Alarm Log Settings button.



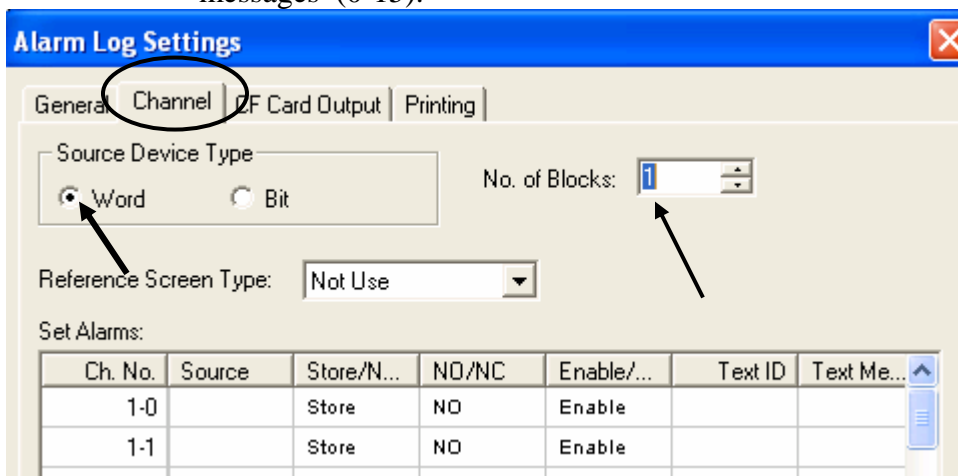
6. Alarm Log Settings (General tab):

- The Storage Method is Rotate (it will discard old data as new data is stored)
- Other check boxes are optional (click on the Help button for further details).
- No. of stored log data for Alarm is 1024 (max.) alarm messages.

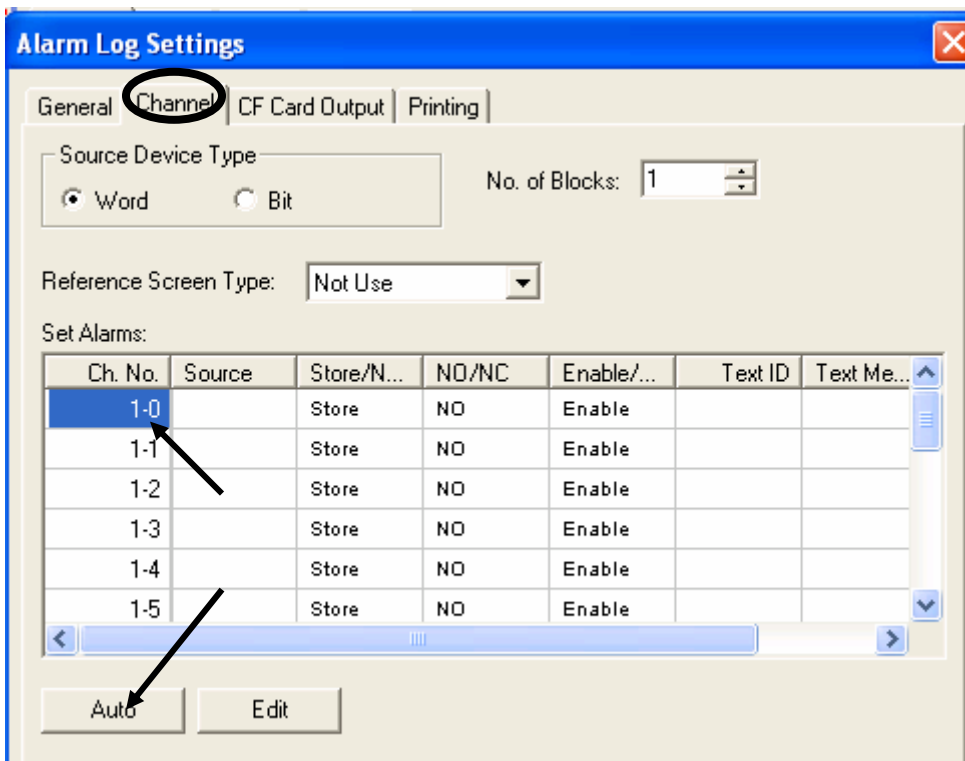


7. Alarm Log Settings (Channel tab):

- a) The Source Device Type is Word.
- b) No. of Blocks: 1 (Table will appear). Each Block consist of 16 channels/ messages (0-15).

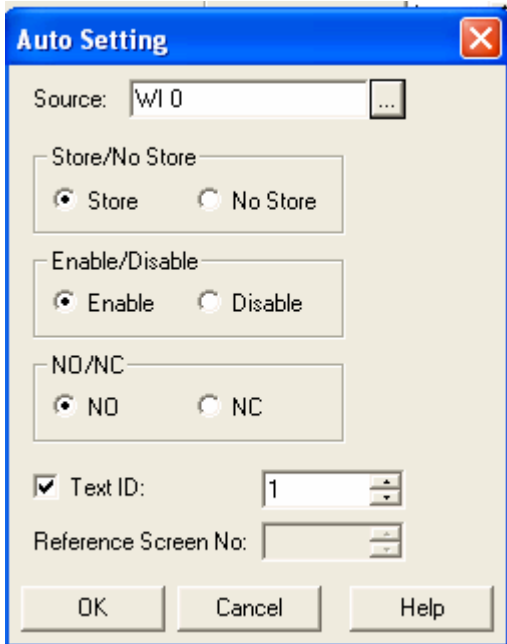


8. In the table, select Ch. No. 1-0 (as shown with arrow) and then select the Auto button.

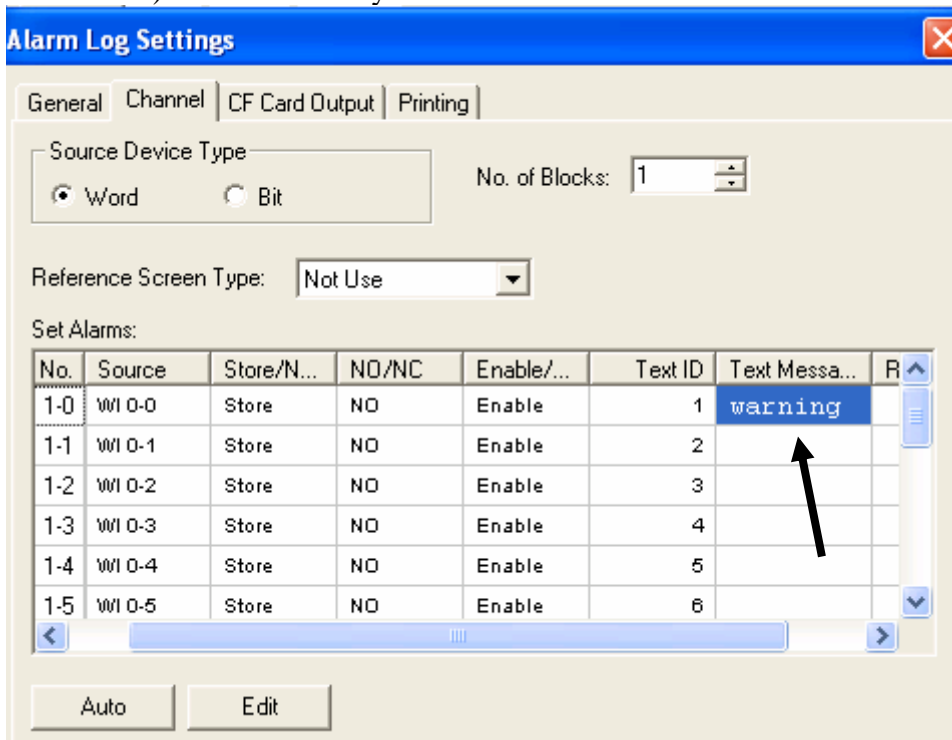


**8.** In the Auto Settings, choose a Source device (word data). In this example, WI 0 is the Source device.

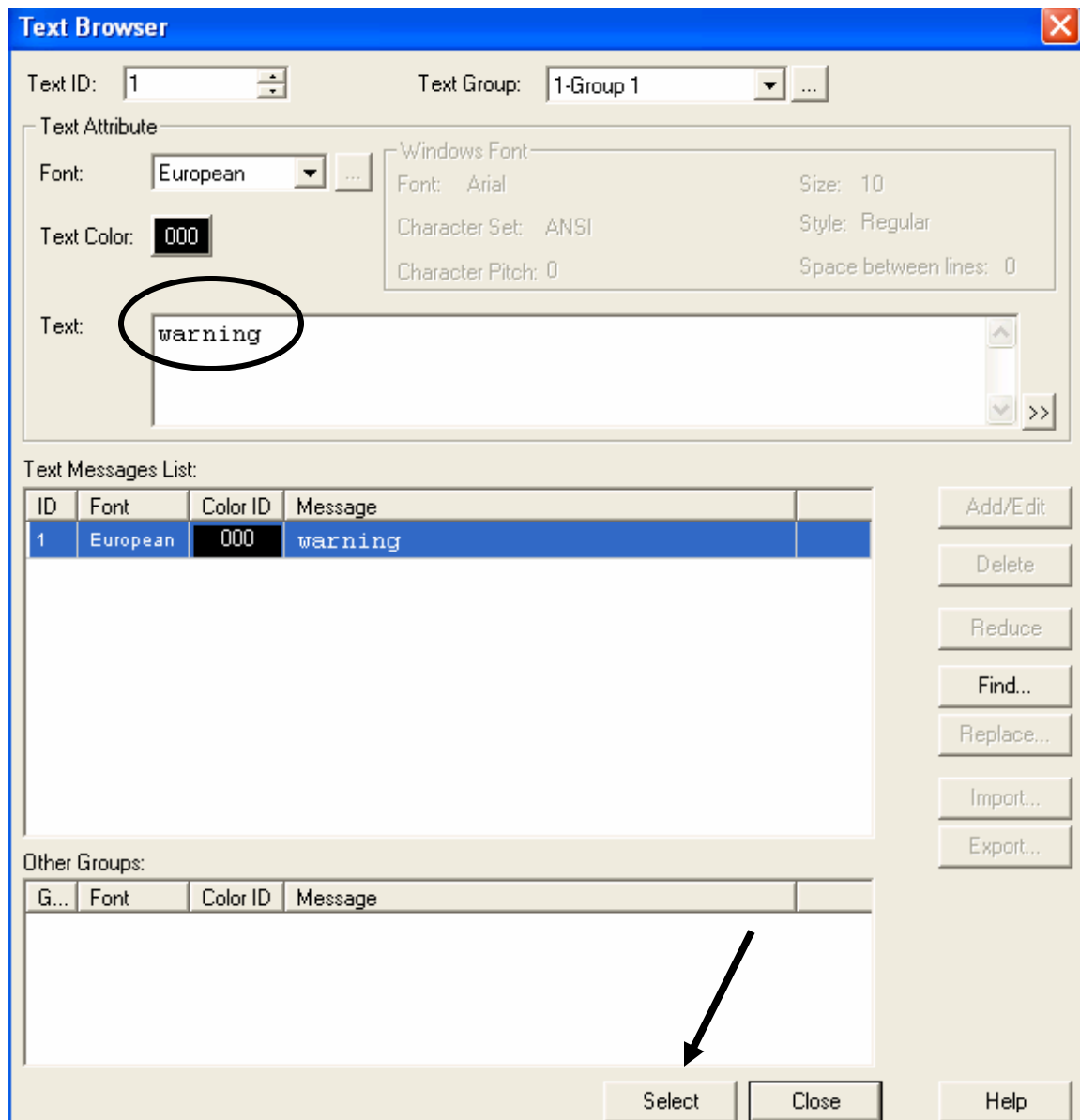
- a) Select Store to store the data in the memory of the operator interface.
- b) Select Enable to monitor the Source device
- c) Select NO to generate an alarm when a bit in the Source device is turned ON.
- d) Check the Text ID box to display the text ID for the message corresponding to a bit from the device.
- d) Click the OK button to return to Alarm Log Settings.



9. Note that the table is now filled with information, from Ch. No 1-0 to 1-15. Now, scroll to the right and double click under the Text Message (as shown with the arrow). This will take you to the Text Browser.



10. In the text box, enter the text message (i.e. the word “warning”). Click the Select button to accept. It will automatically return to the table.



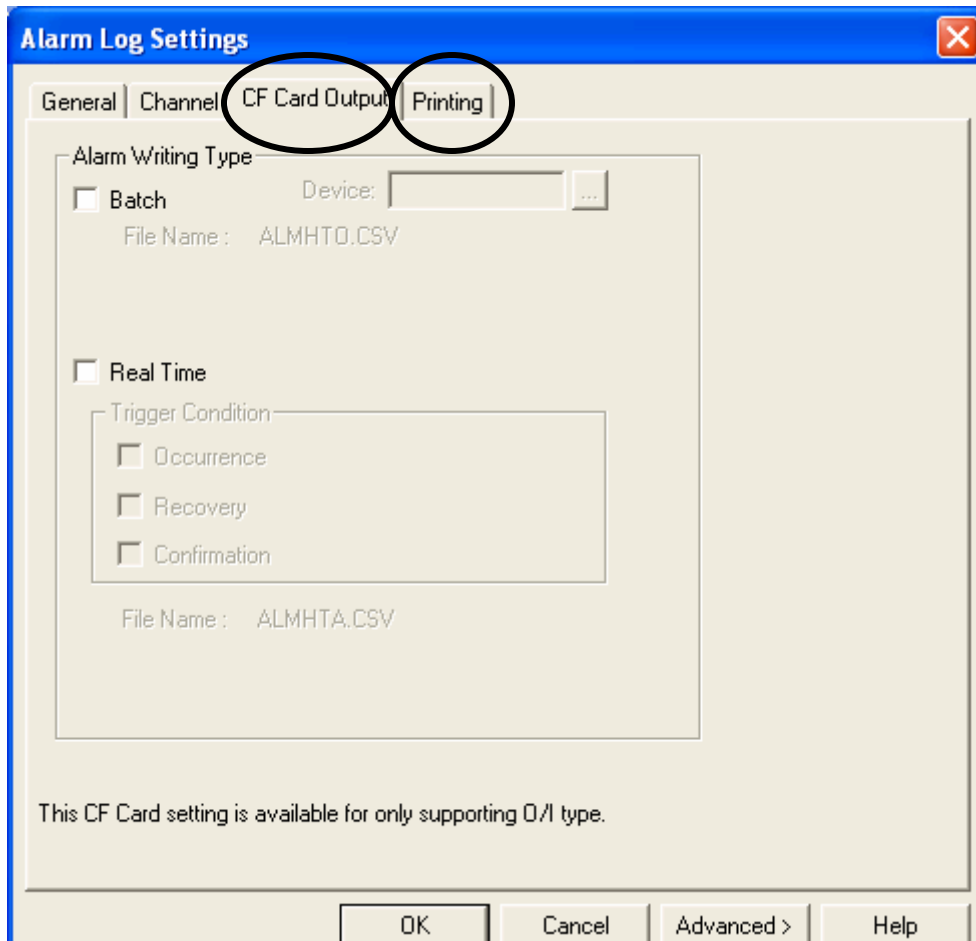
**Note:** To add Text Messages in other channels, just repeat the process starting with step #7.

11. Once done, click the OK buttons to close the dialog box.

12. OPTIONALS:

(Select the HELP button for further details).

- a) Select CF Card Output if you would like the alarm data to be stored in a CF card.
- b) Select Printing if you would like the alarm data to be printed.



### 13. TEST:

Once the programs are downloaded to both PLC and touchscreen, trigger the Inputs (0-15) and the corresponding alarm message will be displayed.