

PASSWORD

(Creating a program in the touchscreen only)

This sample program provides a step by step process on how to create a password to protect a screen. It involves creating a program in the touchscreen only.

The following items are used in this example:

Parts: Keypad, Numerical Input, Go to Screen Command, Word Write Command

D0 = (Address/Device) Storage for the data entered using the keypad

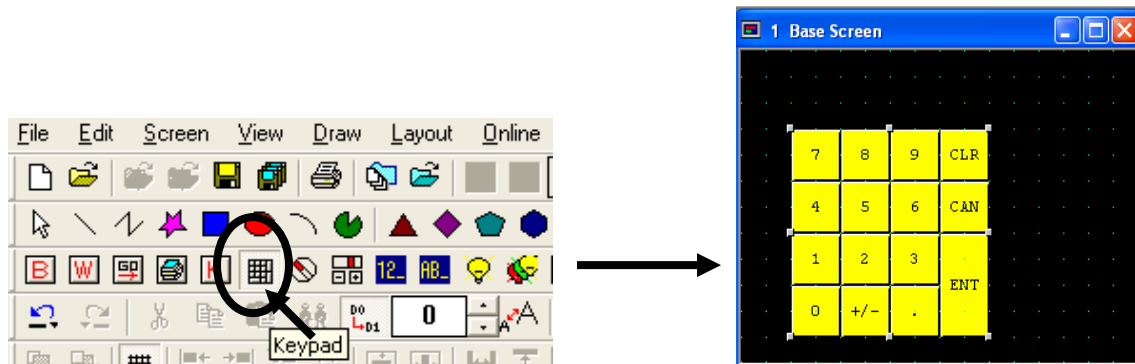
M0 = (Address/ Device) Triggered device when the comparison condition is true

1234 = The password

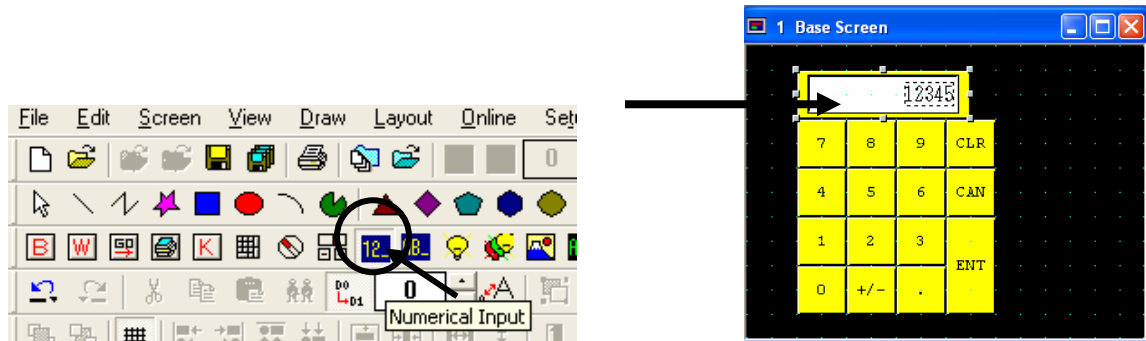
Simply create a Keypad with Numerical Input to enter the password. The value entered from the keypad will be stored in a Data Register (D0) and compared with the password (1234). If the password is correct, the screen will switch to Base Screen #2. While switching to Base Screen #2, the Data Register will have a zero value to clear the condition.

WindO/I-NV2 Software:

1. In WindO/I-NV2, select the Keypad and drop it on the base screen.

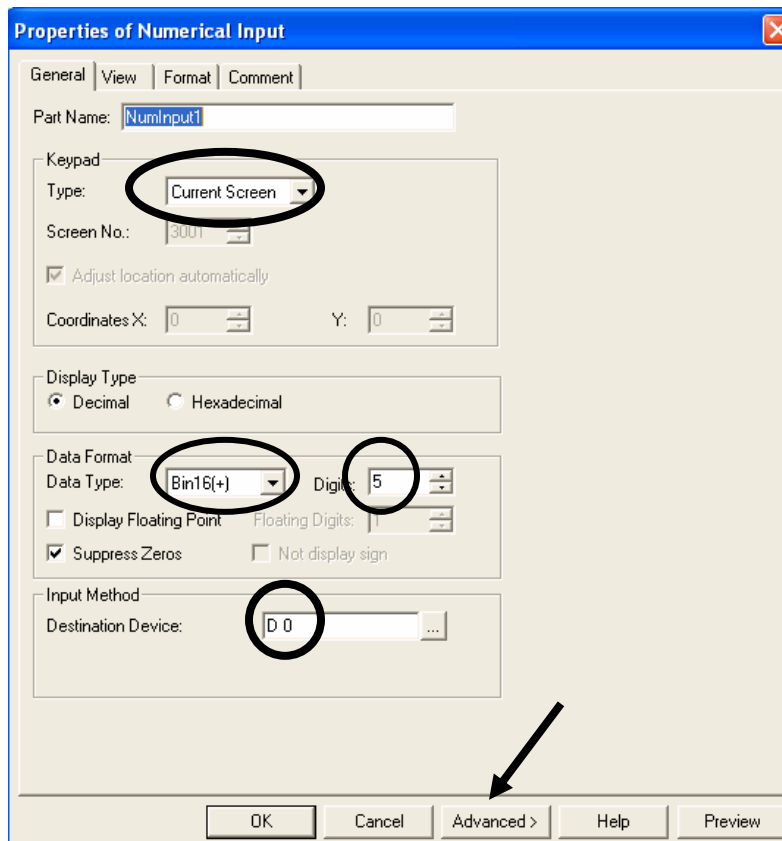


2. Select the Numerical Input and drop it on the base screen. Next, open the Properties of Numerical Input.

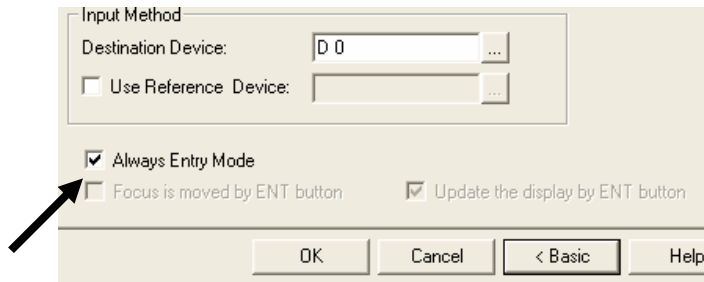


3. Properties of Numerical Input:

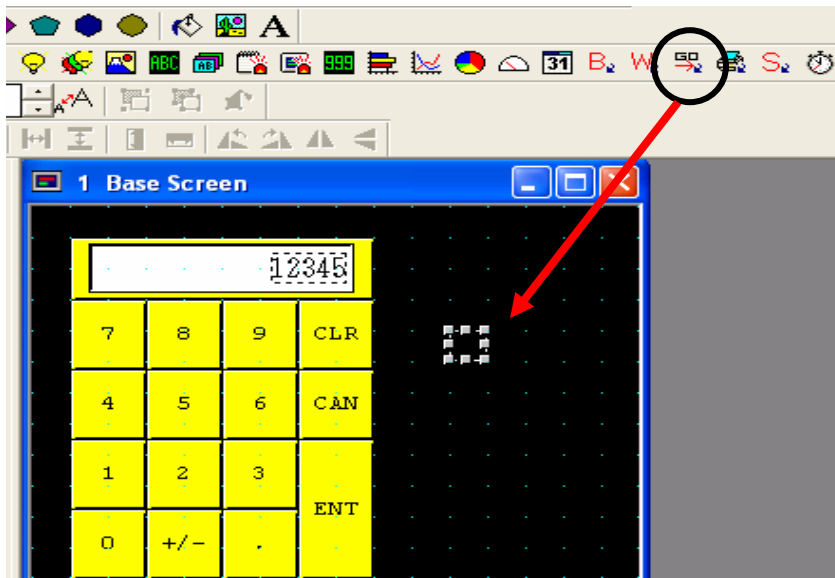
- The keypad type is: Current (location of the keypad is on the current screen (base screen)).
- Display type: Decimal (Data from the PLC is in Decimal format)
- Data type: Bin16+ (Data will range from 0-65535) Digits: 5
- Destination Device: D 0 (Data entered will be stored in a Data Register (i.e. D0))



- Select the Advanced button (located at the bottom) and check the “Always Entry Mode” (always in entry mode) .
- Click on the OK button to close the dialog box.



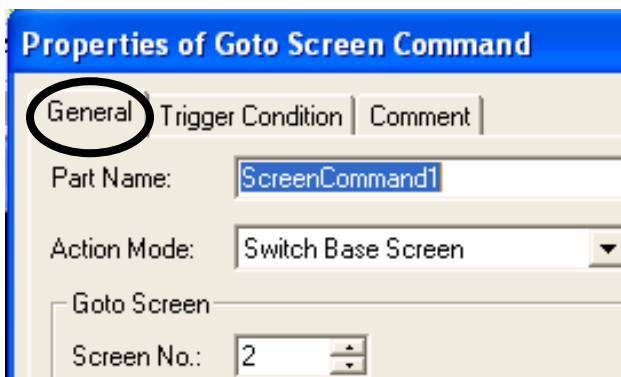
4. Select the Goto Screen Command (located far right) and drop it on the base screen.



5. Configure the Properties of the Goto Screen Command <by double clicking on the part>.

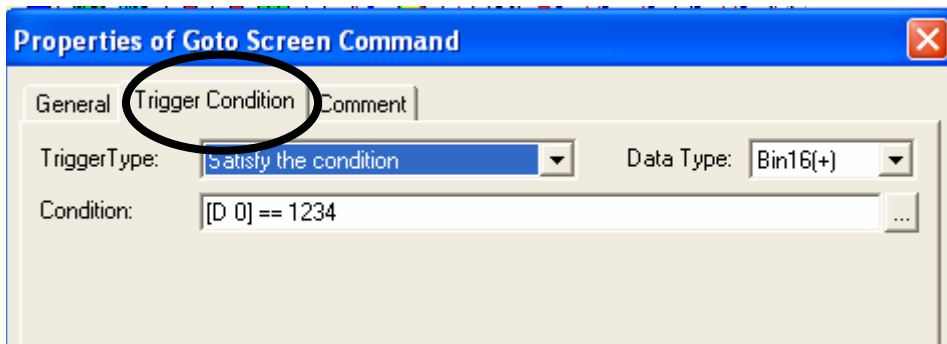
General :

- a) The Action Mode is Switch Base Screen
- b) Goto Screen No. , the number is 2 (the screen will switch to base screen 2 when the comparison condition is true).



6. Select the Trigger Condition:
 - a) For Trigger type select: Satisfy the condition
 - b) Condition: [D 0] == 1234
 - c) Click the OK button to close the properties.


Note: When the condition is satisfied, the base screen will switch to base screen #2.



6. Create Base Screen#2 (Reference to item#5 : Switch Base Screen to # 2).

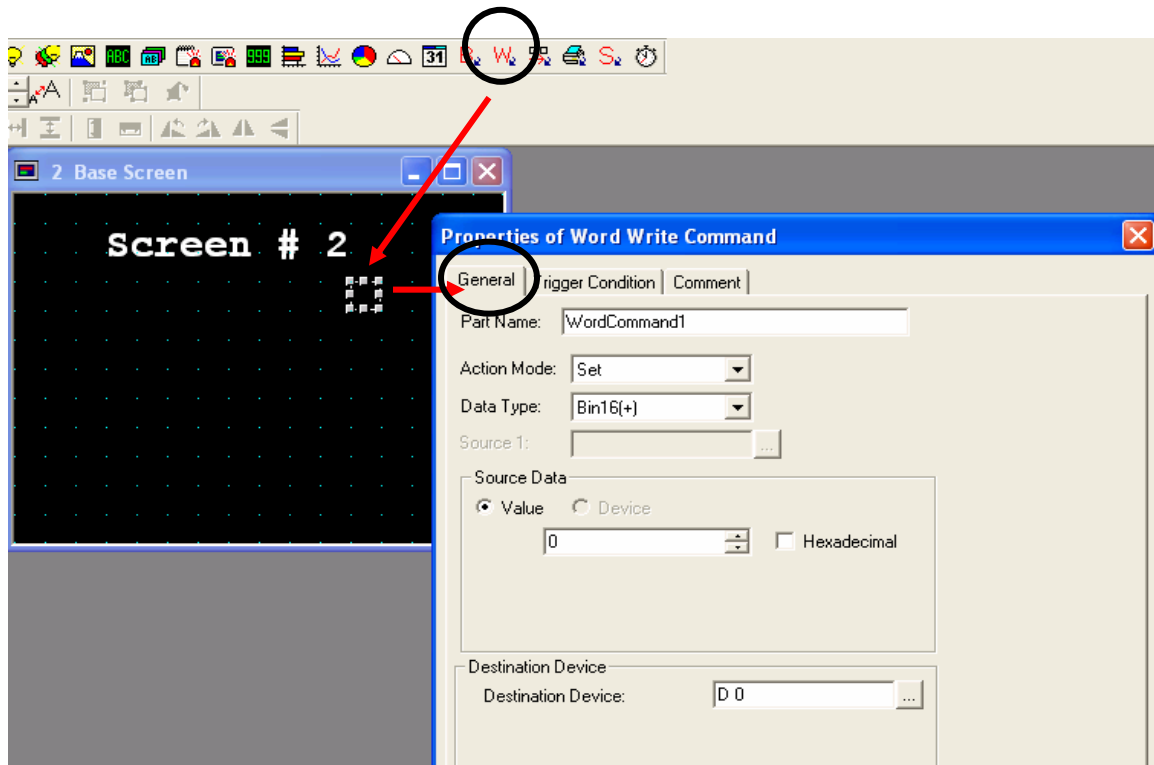


Note: You must clear the value in the data register (D0 = 0) after the condition is met. Otherwise, the value entered in the password screen will not work due to the condition never cleared. The Word Write Command will automatically clear the condition when switched to Base Screen #2.

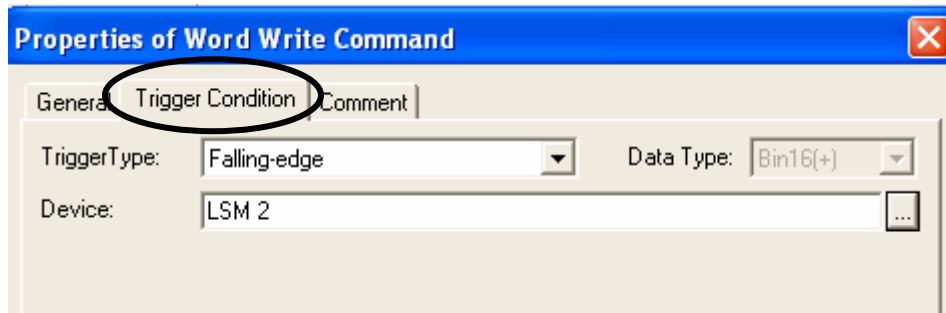
7. Select Word Write Command ()
 - a) Double click for the Properties of Word Write Command
 - b) In the General , select the following:

Action Mode: Set
Data Type: Bin16(+)
Source Data value: 0
Destination: D 0

(This will clear the value in D0 when Base Screen is switched)



8. Select the Trigger Condition tab:
 - c) For Trigger Type: Falling-edge
 - d) Device : LSM 2 (Special Internal Relay: ON for one scan when a Base screen is switched)
- Note: At falling edge of LSM2, the Data Register will have a zero value therefore clearing the condition.



- e) You may now select the OK button to close the Properties of Word Write Command.
- f) Note: Make sure to create a Go to Screen button to return to previous screen or next screen.
- g) Finally, you are ready to download the program and test the function.