

B-947(5)



WindO/I-NV2 Utility Downloader

Instruction Manual

IDEC CORPORATION

Introduction

This instruction manual explains the operation and handling of the “WindO/I-NV2 Utility Downloader”.

Before using the software, read this manual thoroughly to familiarize yourself with this product's function and performance, and to ensure correct operation.

Publication history

June 2005: First Edition

March 2006: Second Edition

May 2006: Third Edition

October 2006: Fourth Edition

March 2007: Fifth Edition

Contents

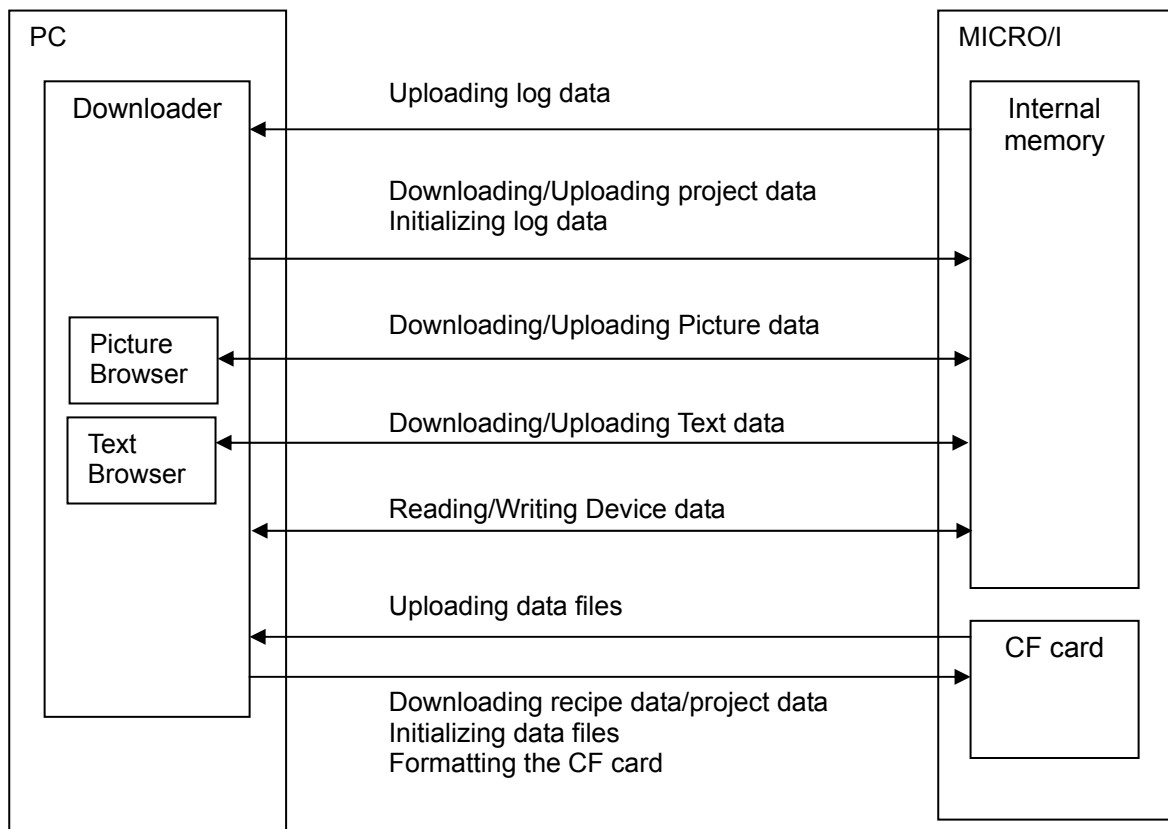
Contents	1
1 Function of Downloader	1
2 Hardware Requirements	2
3 Setup	3
3-1 Installing	3
3-2 Uninstalling	3
4 Restrictions	4
5 Screen Configurations	5
6 Operations	6
6-1 Starting Downloader.....	6
6-2 Communication setting.....	6
6-3 Downloading Project File.....	7
6-4 Uploading Project Data	9
6-5 Uploading Log Data	10
6-6 Initializing Log Data.....	11
6-7 CF Card Maintenance.....	12
6-8 Change Picture Data	15
6-9 Change Text Data	17
6-10 Read Device Data.....	20
6-11 Write Device Data	21
6-12 System Information	22
6-13 Displaying Version Information	23
7 Formatting Log Data.....	24
7-1 Alarm Log Data.....	24
7-2 Logging Data.....	27
8 Download Options	30
9 Utilizing from Another Software.....	32
9-1 Function	34
9-2 Use in Another Software.....	36
9-2-1 Using from Run... ..	36
9-2-2 Using from Power Point.....	37
9-2-3 Using from Excel.....	39

1 Function of Downloader

The Downloader, which can operate separately from WindO/I-NV2, enables the user to communicate with the MICRO/I easily, regardless of whether the user knows its operation or not. In addition, the Downloader can communicate with one or more MICRO/Is, handling multiple data.

Downloader has following functions.

- Downloads/Uploads project data to the MICRO/I with a quick operation.
- Uploads log data - Alarm Log Data and Logging data - saved in the MICRO/I to the personal computer in the CSV file format.
- Initializes log data - Alarm Log Data and Logging data - saved in the MICRO/I.
- Downloads Recipe Data/Project Data to the CF card.
- Uploads and initializes data files in the CF card.
- Formats the CF card.
- Displays the system information.
- Change Picture Data and Text Data.
- Read/Write the specified Device Data.



2 Hardware Requirements

The hardware requirements are as follows.

Item	Specifications
OS	Windows95 (OSR2 or later)/98/Me/NT4.0/2000/XP/Vista (except 64 bit Edition) To use USB interface HG device, the OS should be Windows98/Me/NT4.0/2000/XP, and USB1.1 should be available. Windows XP/Vista 64 bit Edition is not supported. Only Administrator is available in Windows Vista.
Computer	PC-AT or compatible
CPU	Pentium 200MHz or higher
Memory	64MB Minimum
Hard Disk	50MB minimum free space
Graphics	SVGA (800*600 resolutions) minimum
Users	Windows NT4.0/2000/XP: Power Users account and up Windows Vista: Administrators account

3 Setup

3-1 Installing

Use the following operations to install the Downloader.

- **When installing Downloader and WindO/I-NV2 at same time**

1. Insert the WindO/I-NV2 setup CD into the CD-ROM drive.
2. When the WindO/I-NV2 setup launcher does not start automatically, select **Run...** from **Start** menu and type “d:/nv2lanch”. Here the “d” means the drive name for the CD-ROM drive. Then press **OK** button.
3. Select the language you want to install from setup languages and then click **OK** button.
4. Select **Downloader** in the **Select Features** dialog box with the wizard proceeding. The default box is checked.
5. Then follow the instructions on the screen.

- **When installing Downloader only.**

1. Insert the WindO/I-NV2 setup CD into the CD-ROM drive.
2. Select **Run...** from **Start** menu and type “d:/Downloader/setup/setup”. Here the “d” means the drive name for the CD-ROM drive. Then press **OK** button.
3. Then follow the instructions on the screen.

3-2 Uninstalling

Use the following operations to uninstall the Downloader.

- **When uninstalling only Downloader after installing WindO/I-NV2 and Downloader at same time.**

1. Insert the WindO/I-NV2 setup CD into the CD-ROM drive.
2. When the WindO/I-NV2 setup launcher does not start automatically, select **Run...** from **Start** menu and type “d:/nv2lanch”. Here the “d” means the drive name for the CD-ROM drive. Then press **OK** button.
3. Click **Install WindO/I-NV2** from the setup launcher.
4. Disable the selection for **Downloader** on the **Select Functions** dialog of the WindO/I-NV2 installer.
5. Then follow the instructions on the screen.

- **When installing Downloader only.**

1. Select **Control Panel - Add or Remove Programs** to uninstall the Downloader.

4 Restrictions

The Downloader has following restrictions of use.

● Required software version for WindO/I-NV2 and MICRO/I

The Downloader has following restrictions due to the version of the WindO/I-NV2 or the version of the runtime software for the MICRO/I.

The download of the "Project Data for Downloader":	WindO/I-NV2 version 2.82 or later
The download of the "Project Data for CF card":	WindO/I-NV2 version 2.50 or later
The upload:	All WindO/I-NV2s (On the condition that the upload of project data requires the runtime software version 2.00 or later)
The initialization:	All WindO/I-NV2s
The CF card maintenance:	Runtime software version 1.80 or later (On the condition that the download of the running recipe/project data requires the runtime software version 2.00 or later)
Change Picture Data and Text Data:	WindO/INV2 version 3.30 or later
Read/Write the specified Device Data:	WindO/INV2 version 3.30 or later
The system information:	All WindO/I-NV2s (On the condition that the CF card information requires the version 1.80 or later.)

● Formatting Log Data

The Downloader make the format of log data - such as "Alarm Log Data" and "Logging Data" uploaded by the Downloader – into the CSV file format along with the other format saved in the CF card.

For more information, see "7 Formatting Log Data".

5 Screen Configurations

The screen configuration of the Downloader is as follows.



Main window	Functions as the work area of the Downloader
Menu bar	Selects each functions
Status bar	Displays status of selecting menu.

6 Operations

The following steps explain how to use the Downloader.

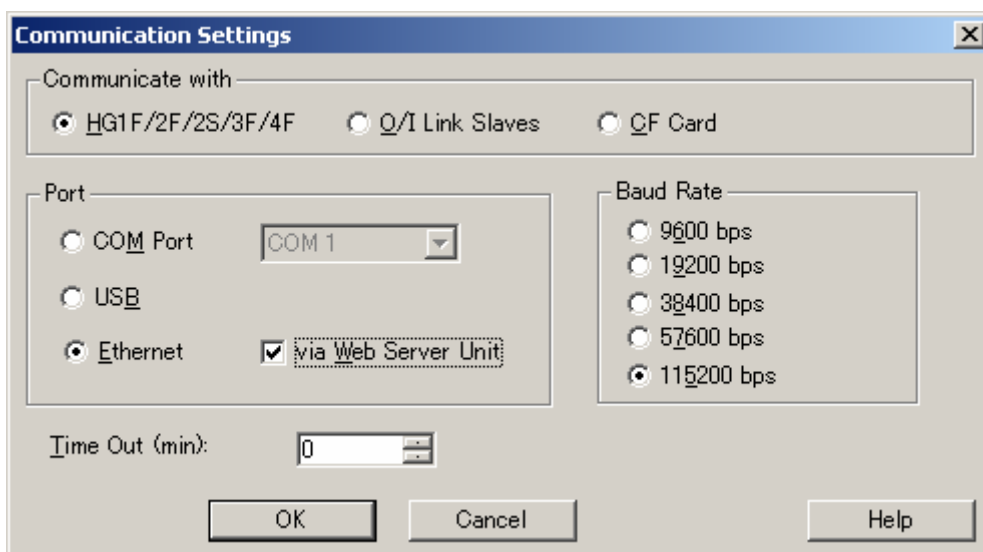
6-1 Starting Downloader

To start the Downloader, select **Programs - WindOI-NV2 - Downloader** from the start menu.

6-2 Communication setting

Use the following operations to make the communication setting between the MICRO/I and the personal computer.

1. Select **Options - Communication Settings...** from the menu bar.
2. Select the communication target.
When selecting **HG1F/2F/2S/3F/4F**, the Downloader communicates with the one HG (Master HG).
When selecting **O/I Link Slaves**, the Downloader communicates with slaves, that is, multiple MICRO/Is.
CF Card is available to only “Change Picture Data” or “Change Text Data”.
3. Select the port.
COM:
Enable you to select the port of use from **COM 1** to **COM 256**, and to set the baud rate.
Ethernet:
Enable you to set **Time out (min)** value in minutes.
Ethernet (via Web Server Unit)
The IDEC Web Server Unit is the RS232C/Ethernet converter.
By connecting the Web Server Unit to the maintenance port (serial 2 port), it is possible to perform the communication via Ethernet.
Baud Rate is for the setting between Web Server Unit and MICRO/I and Time Out is for the setting between PC and Web Server Unit.
For details of the Web Server Unit, refer to the manual of the unit.



6-3 Downloading Project File

The Downloader can download the project data made for the Downloader on the WindO/I-NV2, or the project data made for the CF card, to the MICRO/I.

Most of all, the “Projects Data for Downloader” (*.z##”) can be easily downloaded to the MICRO/I with a quick operation. (##: 1f, 2f, 2s, 3f, 4f)

In addition, the Downloader can download the runtime software or the optional font at same time, depending on the type of the “Project Data for Downloader”.

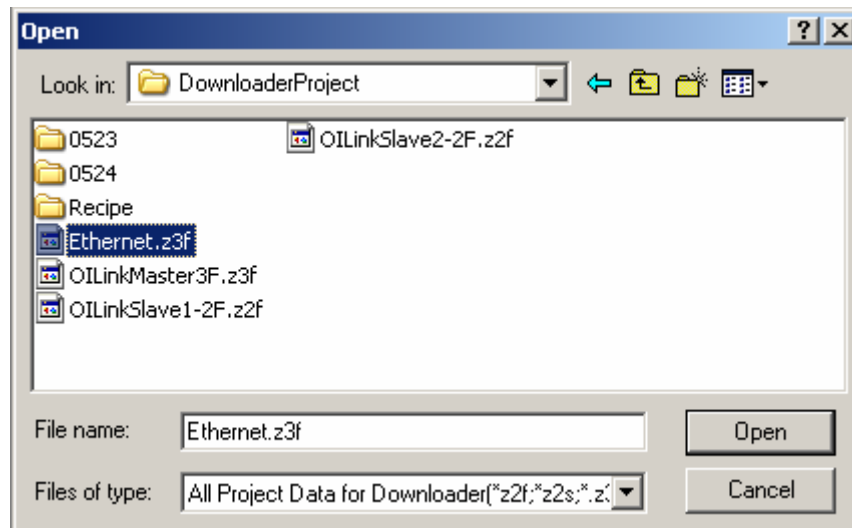
⇒ For more information on how to configure the downloading, see “8 Download Options”.

Use the following operations to download the project.

● Downloading Project File

(The following example is when selecting **HG1F/2F/2S/3F/4F** for **Communication with**, and **COM Port** or **USB** for **Port**.)

1. Select **Download - Project Data for Downloader** from the menu bar.
2. Select the project data file for the Downloader on the **Open** dialog box and then click **Open** button.



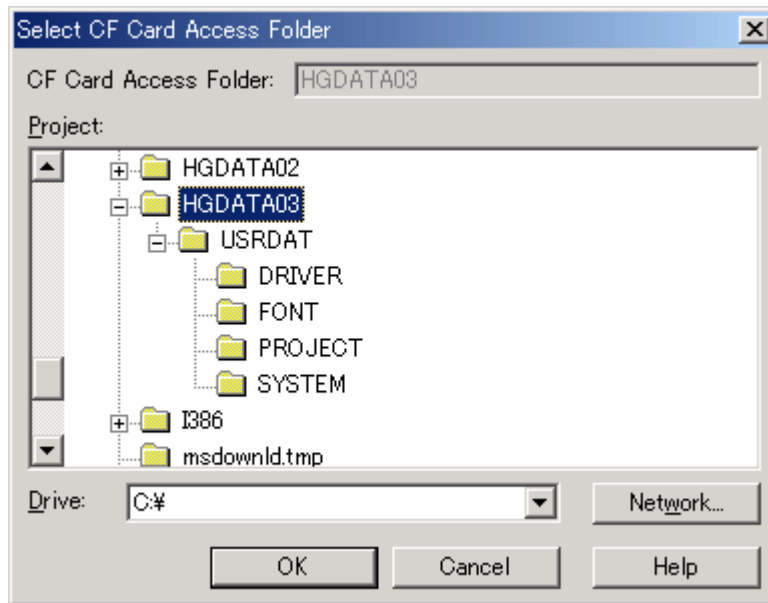
3. Click **Yes** button to authorize the confirmation message for the download.
4. The Downloader begins to download and displays the progress indicator. The communication conditions in this instance are the one you set in **Options - Communication Settings...**
5. After finishing the download, click **Close** button.

● Downloading “Project Data for Downloader” with Quick Operation

1. Double-click the project data file for the Downloader on the explorer. The Downloader starts automatically and begins to communicate with the MICRO/I.
⇒ The communication conditions in this instance are the one created at time of the communication setting of this project data on the WindO/I-NV2.
2. Click **Yes** button to authorize the confirmation message for the download.
3. The Downloader begins to download and displays the progress.
4. Click **Close** button after finishing the download.

● Downloading “Project Data for CF Card”

1. Select **Download – Project Data for CF Card** from the menu bar.
2. Select the access folder for the download from the **Select CF Card Access Folder** dialog box. Then click **OK** button.



3. Click **Yes** button to authorize the confirmation message for the download.
4. The Downloader displays the progress indicator for the download. The communication conditions in this instance are the one you set on **Options - Communication Settings....**
5. Click **Close** button after finishing the download.

- ▶ When you set the password to the user name to which the Administrator Group is allocated in the communicating MICRO/I, the Downloader displays the **Enter Password** dialog box. Enter the password to this user name. Entering the correct password made the Downloader continue to download. However, it is not necessary to select the user name, when the runtime software version is 1.90 or earlier.

Procedure differences according to the communication setting

Applicable operating procedures at the beginning of the communication depend on the setting.

When selecting **HG1F/2F/2S/3F/4F** for **Communicate with**, and **Ethernet** for **Port**

1. The Downloader opens the **Target IP Address** dialog box.
2. Click **OK** button to specify the target IP address.
3. The Downloader begins to download.

When selecting **O/I Link Slaves** for **Communicate with**

1. The Downloader opens the **Target Slaves** dialog box.
2. Select target slaves and click **OK** button.

- ⇨ Only when selecting **Ethernet** for **Port**, the Downloader displays the **Master IP Address** and “...” button on the edit box. Specify the target IP address here.

3. The Downloader begins to download.

6-4 Uploading Project Data

The Downloader can upload the project data in the MICRO/I with the font data, the runtime software, and the recipe data in the CF card at the same time.

Use the following operations to upload the project data.

(The following example is when selecting **HG1F/2F/2S/3F/4F** for **Communication with**, and **COM Port** or **USB** for **Port**)

1. Select **Upload - Project Data** from the menu bar.
 2. The Downloader displays the **Upload Project Data** dialog box. Check the box of data you want to upload at the same time.
 3. Specify the folder to save the uploading project data. Then click **OK** button.
 4. The Downloader begins to upload and displays the progress indicator.
 5. When finishing the upload, click **Close** button.
-
- ▶ When uploading the project data only, upload without opening the box.
 - ▶ When you set the password to the user name to which the Administrator Group is allocated in the communicating MICRO/I, the Downloader displays the **Enter Password** dialog box. Enter the password to this user name. Entering the correct password made the Downloader continue to upload.
 - ▶ The project uploaded by the Downloader is the "Project Data for Downloader" so that you cannot edit this file from **Open Project...** in the WindO/I-NV2. If you want to open and edit this file in the WindO/I-NV2, select **Online - Downloader - Open Project Data for Downloader** from the menu.

6-5 Uploading Log Data

The Downloader can upload logging data and alarm log data stored in the memory of the MICRO/I at same time or separately.

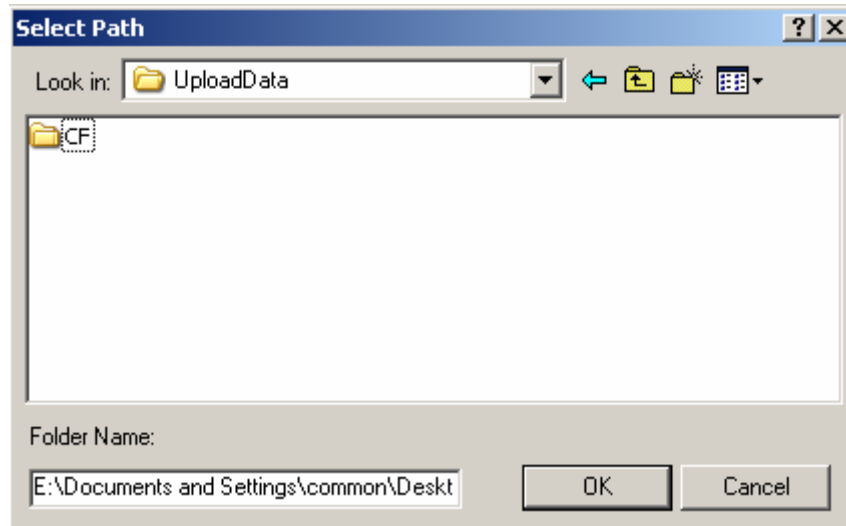
When selecting **O/I Link Slaves** and **Ethernet**, the Downloader can upload log data stored in one or more MICRO/I units at same time.

Use the following operations to upload the log data.

● Uploading All Log Data

(The following example is when selecting **HG1F/2F/2S/3F/4F** for **Communication with**, and **COM Port** or **USB** for **Port**)

1. Select **Upload - All Log Data...** from the menu bar.
2. The **Select Path** dialog box appears. Specify the folder in which the uploaded data files are saved. Then click **OK** button.



3. The Downloader begins to upload and displays the progress indicator.
 4. When finishing the upload, click **Close** button.
- ▶ When you set the password to the user name to which the Reader Group is allocated in the communicating MICRO/I, the Downloader displays the **Enter Password** dialog box. Enter the password to this user name or to the user name to which the Administrator Group or the Operator Group is allocated. Entering the correct password made the Downloader continue to upload. However, it is not necessary to enter the user name, when the runtime software version is 1.90 or earlier.
 - ▶ When uploading either alarm log data or logging data, select **Upload - Alarm Log Data...** or **Upload - Logging Data...** from the menu bar in the step 1. Further steps are the same as above.

Procedure differences according to the communication setting

Applicable operating procedures at the beginning of the communication depend on the setting.

When selecting **HG1F/2F/2S/3F/4F** for **Communicate with**, and **Ethernet** for **Port**

1. The Downloader opens the **Target IP Address** dialog box.
2. Specify the target IP address and then click **OK** button.

3. The Downloader begins to upload.
4. The Downloader saves uploaded data into the folder after which the IP address number is named.

When selecting **O/I Link Slaves** for **Communicate with**

1. The Downloader opens the **Target Slaves** dialog box.
2. Select the target slaves, and then click **OK** button.
- ➔ Only when selecting **Ethernet** for **Port**, the Downloader displays **Master IP Address** and “...” button on the edit box. Specify the target IP address here
3. The Downloader begins to upload.
4. The Downloader saves uploaded data in the folder after which the slave number is named.

6-6 Initializing Log Data

The Downloader can initialize logging data and alarm data stored in the memory of the MICRO/I at same time or separately.

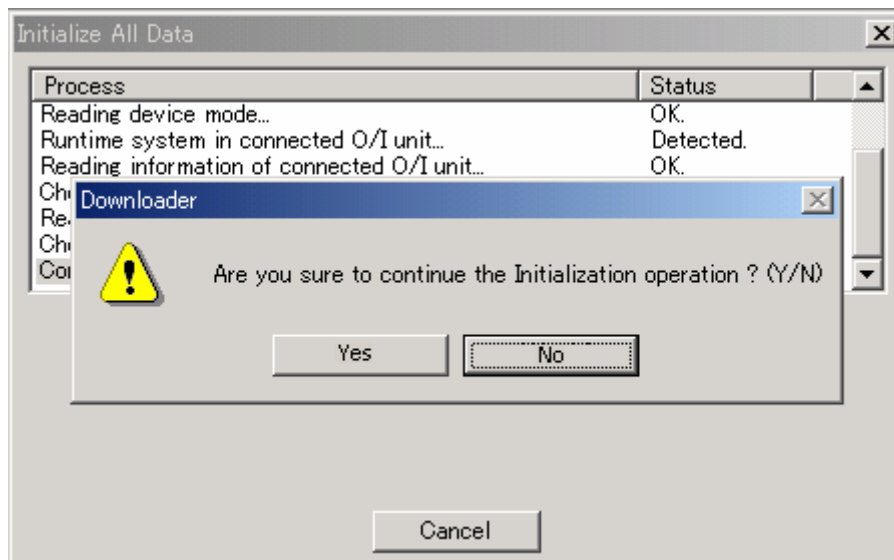
When selecting **O/I Link Slaves** and **Ethernet**, the Downloader can initialize log data stored in one or more MICRO/I units at same time.

Use the following operations to initialize log data.

● Initializing All Log Data

(The following example is when selecting **HG1F/2F/2S/3F/4F** for **Communication with**, and **COM Port** or **USB** for **Port**.)

1. Select **Initialize - All Log Data...** from the menu bar.
2. Click **Yes** button to authorize the confirmation message for the initialization.



3. The Downloader begins to initialize and displays the progress indicator.
4. After finishing the initialization, click **Close** button.

- ▶ When initializing either alarm log data or logging data, select **Alarm log data...** or **Logging Data...** individually from **Initialize** in the menu bar in the step 1. Further steps are the same

as above.

- ▶ When you set the password to the user name to which the Administrator Group is allocated in the communicating MICRO/I, the Downloader displays the **Enter Password** dialog box. Enter the password to this user name. Entering the correct password made the Downloader continue to initialize. However, it is not necessary to select the user name, when the runtime software version is 1.90 or earlier.

Procedure differences according to the communication setting

Applicable operating procedures at the beginning of the communication depend on the setting.

When selecting **HG1F/2F/2S/3F/4F** for **Communicate with**, and **Ethernet** for **Port**

1. The Downloader opens the **Target IP Address** dialog box.
2. Specify the target IP address, and then click **OK** button.
3. The Downloader begins to initialize.

When selecting **O/I Slave Link** for **Communicate with**

1. The Downloader opens the **Target Slaves** dialog box.
2. Select the target slave and then click **OK** button.
- ⇨ Only when selecting **Ethernet** for **Port**, the Downloader displays the **Master IP Address** and “...” button on the edit box. Specify the target IP address here.
3. The Downloader begins to initialize.

6-7 CF Card Maintenance

The Downloader can do maintenance for the data in the CF card inserted into the MICRO/I.

When selecting **O/I Link Slaves** and **Ethernet**, the Downloader can do maintenance for the CF card inserted in one or more MICRO/I units at same time.

The Downloader do maintenance targeting the data in the CF access folder set on the working project in the MICRO/I.

The maintenance consists of following six items.

- The download of project data
The Downloader downloads project data to the CF card.
- The download of recipe data
The Downloader downloads recipe data (RCP###.CSV) into the recipe folder in the CF card.
- The download of recipe data while running
The Downloader downloads recipe data without stopping the MICRO/I's operation.
- The upload
The Downloader uploads log data, logging data, recipe data and screen hard copy data in the CF card to anywhere in the personal computer.
- The initialization
The Downloader initializes (deletes) log data, logging data, recipe data, screen hard copy data, and project data in the CF card.
- The formatting
The Downloader formats the CF card.

Use the following operations to do maintenance for the CF card.

(The following example is when selecting **HG1F/2F/2S/3F/4F** for **Communicate with**, and **COM Port** or **USB** for **Port**.)

● Downloading Project Data

1. Select **CF Card Maintenance - Download Project Data** from the menu bar.
 2. The Downloader displays the **Open** dialog box. Select project data to download and click **Open** button.
 3. Click **OK** button to authorize the confirmation message.
 4. The Downloader begins to download and displays the progress indicator.
 5. After finishing the download, click **Close** button.
- ▶ When you set the password to the user name to which the Operator Group is allocated in the communicating MICRO/I, the Downloader displays the **Enter Password** dialog box. Enter the password to this user name or to the user name to which the Administrator Group is allocated.
Entering the correct password made the Downloader continue to download.
- ▶ When you download the Project Data to CF Card, the Project Data must contain runtime software and optional font.
Select the Project Data which contains runtime software and optional font to download.

● Downloading Recipe Data

1. Select **CF Card Maintenance - Download Recipe Data...** from the menu bar.
 2. The Downloader displays the **Open** dialog box. Select the recipe data file for the download and click **Open** button.
 3. Click **OK** button to authorize the confirmation message.
 4. The Downloader begins to download and displays the progress indicator.
 5. After finishing the download, click **Close** button.
- ▶ When you set the password to the user name to which the Administrator Group is allocated in the communicating MICRO/I, the Downloader displays the **Enter Password** dialog box. Enter the password to this user name.
Entering the correct password made the Downloader continue to initialize.
However, it is not necessary to select the user name, when the runtime software version is 1.90 or earlier.

● Downloading Recipe Data while Running

1. Select **CF Card Maintenance - Download Recipe Data while running** from the menu bar.
 2. Further steps are the same as the download.
- ▶ When you set the password to the user name to which the Operator Group is allocated in the communicating MICRO/I, the Downloader displays the **Enter Password** dialog box. Enter the password to this user name or to the user name to which the Administrator Group is allocated.
Entering the correct password made the Downloader continue to download.
- ▶ When you set **O/I Link Slaves to Communication with** in the Communication Settings, you can not download recipe data while running.

● Uploading Data in CF Card

1. Select **CF Card Maintenance – Upload...** from the menu bar.
 2. The Downloader displays the **Upload from the CF card** dialog box. Check the box of data you want to upload.
 3. Click “...” button to select the folder for saving the uploaded data file. Then click **OK** button.
 4. Click **Yes** button to authorize the confirmation message for uploading.
 5. The Downloader begins to upload and displays the progress indicator.
 6. After finishing the upload, click **Close** button.
- ▶ When you set the password to the user name to which the Reader Group is allocated in the communicating MICRO/I, the Downloader displays the **Enter Password** dialog box.

Enter the password to this user name or to the user name to which the Administrator Group or the Operator Group is allocated.

Entering the correct password made the Downloader continue to upload.

However, it is not necessary to enter the user name, when the runtime software version is 1.90 or earlier.

● Initializing Data in CF Card

1. Select **CF Card Maintenance – Initialize...** from the menu bar.
2. The Downloader displays the **Initialize CF card** dialog box. Check the box of data you want to delete and then click **OK** button.
3. Click **Yes** button to authorize the confirmation message for initializing.
4. The Downloader begins to initialize and displays the progress indicator.
5. After finishing the initialization, click **Close** button.

- ▶ When you set the password to the user name to which the Administrator Group is allocated in the communicating MICRO/I, the Downloader displays the **Enter Password** dialog box. Enter the password to this user name. Entering the correct password made the Downloader continue to initialize. However, it is not necessary to select the user name, when the runtime software version is 1.90 or earlier.

● Formatting CF Card

1. Select **CF Card Maintenance - Format** from the menu bar.
2. Click **Yes** button to authorize the confirmation message for formatting.
3. The Downloader begins to format and displays the progress indicator.
4. After finishing the format, click **Close** button.

- ▶ When setting the password to the project in the MICRO/I, the Downloader displays the **Enter Password** dialog box. After entering the password, click **OK** button.
- ▶ When you set the password to the user name to which the Administrator Group is allocated in the communicating MICRO/I, the Downloader displays the **Enter Password** dialog box. Enter the password to this user name. Entering the correct password made the Downloader continue to format. However, it is not necessary to select the user name, when the runtime software version is 1.90 or earlier.

Procedure differences according to the communication setting

Applicable operating procedures at the beginning of the communication depend on the setting.

When selecting **HG1F/2F/2S/3F/4F** for **Communication with**, and **Ethernet** for **Port**.

1. The Downloader opens the **Target IP Address** dialog box.
2. Specify the target IP address and click **OK** button.
3. The Downloader begins to communicate.

When selecting **O/I Link Slaves** for **Communication with**

1. The Downloader opens the **Target Slaves** dialog box.
2. Select target slaves and click **OK** button.
- ⇨ Only when selecting **Ethernet** for **Port**, the Downloader displays the **Master IP Address** and “...” button on the edit box. Specify **Target IP Address** here.
3. The Downloader begins to communicate.

6-8 Change Picture Data

The Downloader can change only Picture Data with opening project data for Downloader or uploading the Picture Data from MICRO/I.

The change of Picture Data is done with Picture Browser.

When Picture file of the same name as the already registered Picture is imported, the image is overwritten.

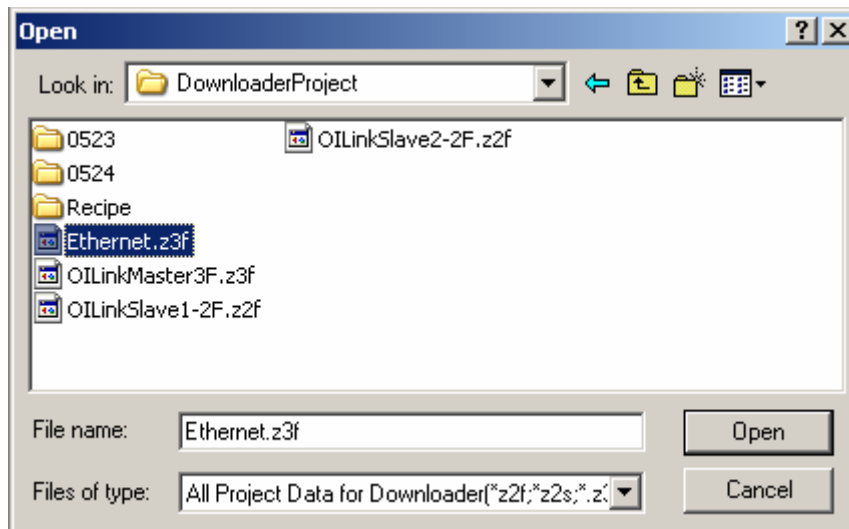
The importable Picture file is BMP, WMF, DXF, JPEG and ICO.

Use the following operations to change Picture Data.

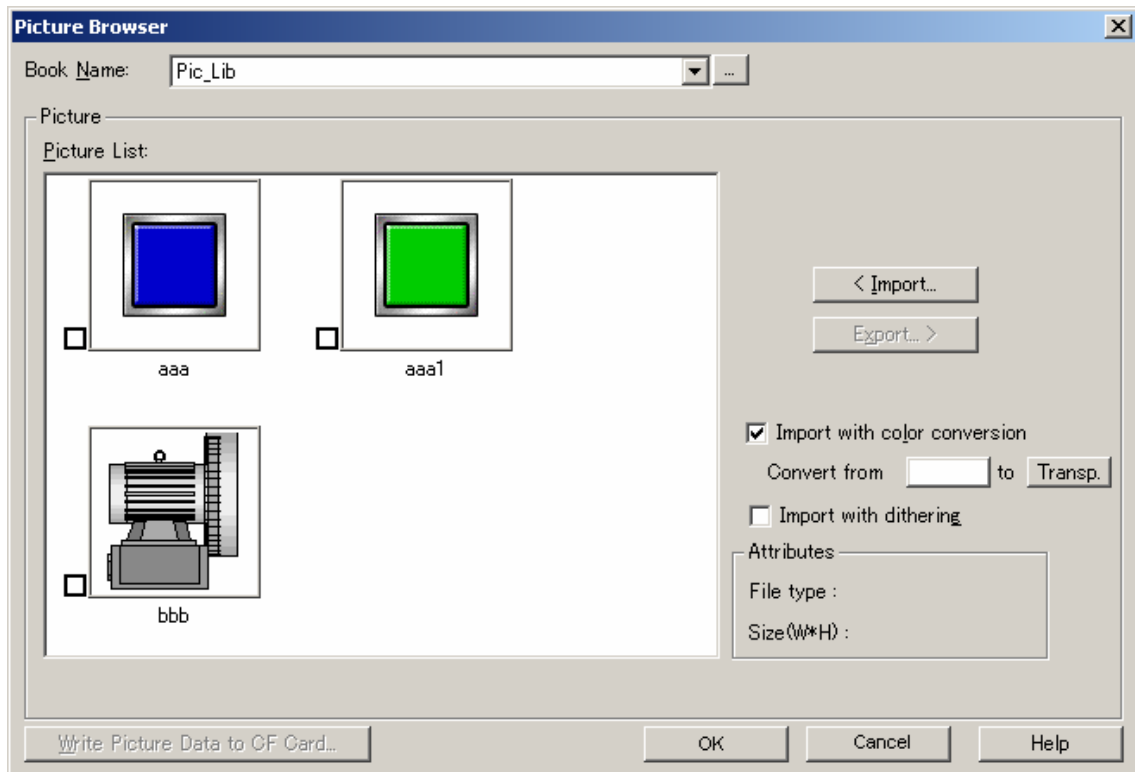
● Change Picture in Project Data for Downloader

(The following example is when selecting **HG1F/2F/2S/3F/4F** for **Communication with**, and **COM Port** or **USB** for **Port**.)

1. Select **Options – Change Picture Data – Picture in Project Data for Downloader** from the menu bar.
2. Select the project data file for the Downloader on the **Open** dialog box and then click **Open** button.



3. Change Picture Data on the opened **Picture Browser**.



- Book Name:** The images displayed in Picture List change according to the Book selected by you.
- Import:** Select Picture that you want to change on **Open** dialog box.
File name of Picture file specified by you must be same as the already registered Picture Name in Picture List.
If the size of the changed image is different from the original image, it may be displayed with the different image because the image is resized on the screen of MICRO/I automatically.
- Export:** Export the Picture selected by you in Picture List with converting to bitmap file.
Change the image with importing the bitmap file after editing the exported bitmap file on **Microsoft Paint** etc.
- Import with color conversion:**
When this check box is selected, you can convert the specified color to the specified color while importing the image. You can specify the original color and the destination color. You can choose the destination color as transparent too.
- Import with dithering:**
When this check box is selected, dithering is performed on the file when it is registered. Dithering can ensure that graphics with tone gradations and photographs are registered so that they remain attractive to look at.
- Attributes:** Display the attributes of the image selected in the image list.
File Type: Display the type of the registered file.
Size(W*H): Display the file size.
- Write Picture Data to CF Card:**
Save all picture data you selected to the CF card as one-file.

4. Click **OK** button to start the downloading the changed Picture data.
5. The Downloader begins to download and displays the progress indicator. The communication conditions in this instance are the one you set in **Options - Communication Settings...**
6. When the project data size exceeds the downloadable size while downloading the changed Picture data, error message is displayed.
7. After finishing the download, click **Close** button.

● Change Picture uploaded from HG

(The following example is when selecting **HG1F/2F/2S/3F/4F** for **Communication with**, and **COM Port** or **USB** for **Port**.)

1. Select **Options – Change Picture Data – Picture uploaded from HG** from the menu bar.
 2. Select the project data file for the Downloader on the **Open** dialog box and then click **Open** button.
 3. The Downloader begins to upload and displays the progress indicator.
 4. After finishing the upload, you can change Picture on the opened **Picture Browser**. For **Picture Browser**, refer to “**Change Picture in Project Data for Downloader**”.
 5. Click **OK** button to start the downloading the changed Picture data.
 6. The Downloader begins to download and displays the progress indicator. The communication conditions in this instance are the one you set in **Options - Communication Settings...**
 7. When the project data size exceeds the downloadable size while downloading the changed Picture data, error message is displayed.
 8. After finishing the download, click **Close** button.
- ▶ When you set the password to the user name to which the Administrator Group is allocated in the communicating MICRO/I, the Downloader displays the **Enter Password** dialog box. Enter the password to this user name. Entering the correct password made the Downloader continue to next step.

Procedure differences according to the communication setting

Applicable operating procedures at the beginning of the communication depend on the setting.

When selecting **HG1F/2F/2S/3F/4F** for **Communicate with**, and **Ethernet** for **Port**

1. The Downloader opens the **Target IP Address** dialog box.
2. Click **OK** button to specify the target IP address.
3. The Downloader begins the communication.

When selecting **O/I Link Slaves** for **Communicate with**

4. The Downloader opens the **Target Slaves** dialog box.
5. Select target slaves and click **OK** button.

⇨ Only when selecting **Ethernet** for **Port**, the Downloader displays the **Master IP Address** and “...” button on the edit box. Specify the target IP address here.

6. The Downloader begins to download.

6-9 Change Text Data

The Downloader can change only Text Data with opening project data for Downloader or uploading the Text Data from MICRO/I.

The change of Text Data is done with Text Browser.

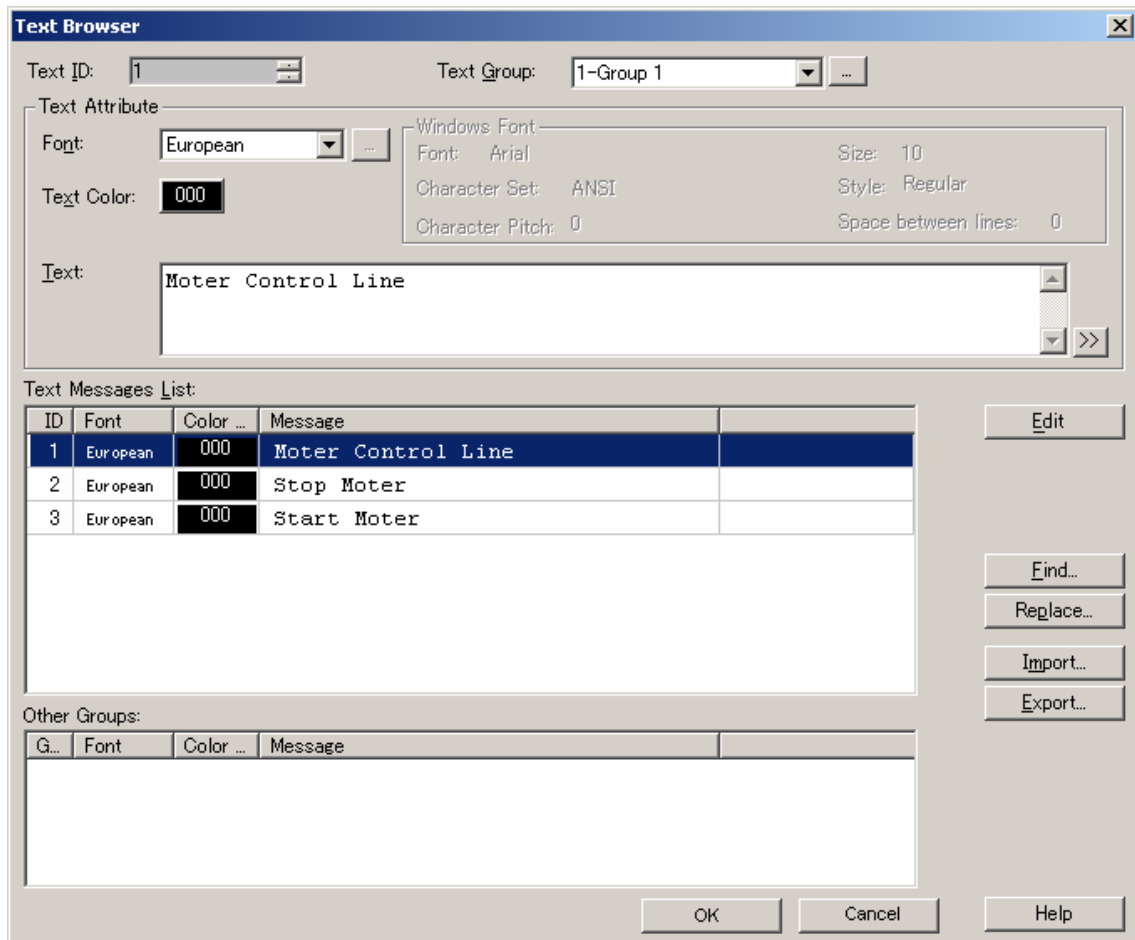
You can change Text Data with clicking **Edit** button after changing the text of the already registered Text ID.

Use the following operations to change Text Data.

● Change Text in Project Data for Downloader

(The following example is when selecting **HG1F/2F/2S/3F/4F** for **Communication with**, and **COM Port** or **USB** for **Port**.)

1. Select **Options – Change Text Data – Text in Project Data for Downloader** from the menu bar.
2. Select the project data file for the Downloader on the **Open** dialog box and then click **Open** button.
3. Change Text Data on the opened **Text Browser**.



- Text ID:** The ID of the selected text in Text Message List is displayed.
- Text Group:** The texts displayed in Text Message List change according to the Text Group selected by you.
- Text Attribute:** You can change not only Text but also Font or Text Color.
Input characters of text up to 3750. To input a special character or symbol, click the [>>] button to invoke **Unicode Input** dialog box in Windows NT/2000/XP/Vista.
- Text Message List:** Display the registered Text in Text Browser. In the case of multiple lines of text, “\n” represents a carriage return.
- Edit:** Change the text of Text ID selected in Text Message List to Font, Text Color and Text displayed in Text Attribute.
- Find:** Searches for a specified text string in the Text Message List.
- Replace:** Replaces a specified text string in the Text Message List.
- Import:** You can change current text settings by importing text settings list.
When you change Text, recommend to export the text registered in **Text Browser** then change the exported text then import the changed text.
The file extension for the Text Setting List file is *.txt and *.csv. The Text Setting List file includes the Text ID, font, text but only the font and text are read. While reading, font name should be matched font list name.
Using Unicode format, you can handle multiple languages with Unicode applicable applications, like Excel or editors. Unicode format is available on Windows NT/2000/XP/Vista.
- Export:** You can export the current text settings list to the file.
You can write the content set using the Text Browser to a CSV-format file (delimiter

is comma or semicolon) or tab delimited Unicode text. The file extension is *.csv or *.txt.

Using Unicode format, you can see or edit multiple languages with Unicode applicable applications, like Excel or editors. Unicode format is available on Windows NT/2000/XP/Vista.

4. Click **OK** button to start the downloading the changed Text data.
5. The Downloader begins to download and displays the progress indicator. The communication conditions in this instance are the one you set in **Options - Communication Settings...**
6. When the project data size exceeds the downloadable size while downloading the changed Text data, error message is displayed.
7. After finishing the download, click **Close** button.

● Change Text uploaded from HG

(The following example is when selecting **HG1F/2F/2S/3F/4F** for **Communication with**, and **COM Port** or **USB** for **Port**.)

1. Select **Options – Change Text Data – Text uploaded from HG** from the menu bar.
 2. Select the project data file for the Downloader on the **Open** dialog box and then click **Open** button.
 3. The Downloader begins to upload and displays the progress indicator.
 4. After finishing the upload, you can change Text on the opened **Text Browser**. For **Text Browser**, refer to “**Change Text in Project Data for Downloader**”.
 5. Click **OK** button to start the downloading the changed Text data.
 6. The Downloader begins to download and displays the progress indicator. The communication conditions in this instance are the one you set in **Options - Communication Settings...**
 7. When the project data size exceeds the downloadable size while downloading the changed Text data, error message is displayed.
 8. After finishing the download, click **Close** button.
- ▶ When you set the password to the user name to which the Administrator Group is allocated in the communicating MICRO/I, the Downloader displays the **Enter Password** dialog box. Enter the password to this user name. Entering the correct password made the Downloader continue to next step.

Procedure differences according to the communication setting

Applicable operating procedures at the beginning of the communication depend on the setting.

When selecting **HG1F/2F/2S/3F/4F** for **Communicate with**, and **Ethernet** for **Port**

1. The Downloader opens the **Target IP Address** dialog box.
2. Click **OK** button to specify the target IP address.
3. The Downloader begins the communication.

When selecting **O/I Link Slaves** for **Communicate with**

4. The Downloader opens the **Target Slaves** dialog box.
 5. Select target slaves and click **OK** button.
- ⇒ Only when selecting **Ethernet** for **Port**, the Downloader displays the **Master IP Address** and “...” button on the edit box. Specify the target IP address here.
6. The Downloader begins to download.

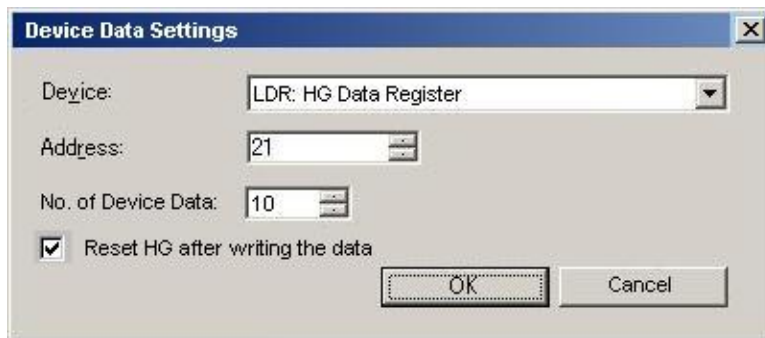
6-10 Read Device Data

The Downloader can read the data stored in the specified Device Address and can save the data with CSV file format.

Use the following operations to read Device Data.

(The following example is when selecting **HG1F/2F/2S/3F/4F** for **Communication with**, and **COM Port** or **USB** for **Port**)

1. Select **Option – Read Device Data...** from the menu bar.
2. The **Device Data Settings** dialog box appears. Specify the header address of Device Address and the number of data which you want to read. Then click **OK** button.



3. The **Save** dialog box appears. Specify the folder in which the read data files are saved. Then click **OK** button.
4. The Downloader begins to read Device Data and displays the progress indicator.
5. When finishing the reading, click **Close** button. The read data is saved with CSV file format.

- ▶ When you set the password to the user name to which the Reader Group is allocated in the communicating MICRO/I, the Downloader displays the **Enter Password** dialog box. Enter the password to this user name or to the user name to which the Administrator Group or the Operator Group is allocated. Entering the correct password made the Downloader continue to read Device Data.

Procedure differences according to the communication setting

Applicable operating procedures at the beginning of the communication depend on the setting.

When selecting **HG1F/2F/2S/3F/4F** for **Communicate with**, and **Ethernet** for **Port**

1. The Downloader opens the **Target IP Address** dialog box.
2. Specify the target IP address and then click **OK** button.
3. The Downloader begins to read Device Data.
4. The Downloader saves the read data into the folder after which the IP address number is named.

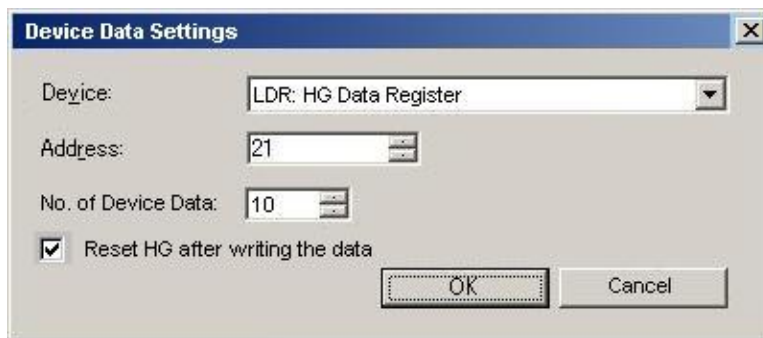
When selecting **O/I Link Slaves** for **Communicate with** Not support

6-11 Write Device Data

The Downloader can write the data saved in CSV file to the specified Device Address. Use the following operations to write Device Data.

(The following example is when selecting **HG1F/2F/2S/3F/4F** for **Communication with**, and **COM Port** or **USB** for **Port**)

1. Select **Option – Write Device Data...** from the menu bar.
2. The **Device Data Settings** dialog box appears. Specify the header address of Device Address and the number of data which you want to write. If you want to reset MICRO/I after writing Device Data, check the box of **Reset HG after writing the data**. Then click **OK** button.



3. The **Open** dialog box appears. Specify the file which Device Data is saved. Then click **Open** button.
 4. The Downloader begins to write Device Data and displays the progress indicator.
 5. When finishing the writing, click **Close** button.
 6. When **Reset HG after writing the data** check box is ON, MICRO/I is reset after writing the data. When the check box is OFF, it isn't reset.
- ▶ When you set the password to the user name to which the Operator Group is allocated in the communicating MICRO/I, the Downloader displays the **Enter Password** dialog box. Enter the password to this user name or to the user name to which the Administrator Group is allocated.
Entering the correct password made the Downloader continue to write Device Data.

Procedure differences according to the communication setting

Applicable operating procedures at the beginning of the communication depend on the setting.

When selecting **HG1F/2F/2S/3F/4F** for **Communicate with**, and **Ethernet** for **Port**

1. The Downloader opens the **Target IP Address** dialog box.
2. Specify the target IP address and then click **OK** button.
3. The Downloader begins to write Device Data.

When selecting **O/I Link Slaves** for **Communicate with** Not support

6-12 System Information

The system information enables you to confirm the runtime software information in the MICRO/I and the project information now downloading.

Use the following operation to confirm the system information.

(The following example is when selecting **HG1F/2F/2S/3F/4F** for **Communication with**, and **COM Port** or **USB** for **Port**.)

1. Select **Options - Target Information** from the menu bar.
2. The Downloader begins to communicate in no time and displays the project information.

Target Runtime Information	
O/I Type:	Unknown
Runtime Version:	1.80
Memory Space (Byte):	6946816
Target Font Information...	
Target CF Card Information...	

Target Project Information	
Project Name:	0620CommandlineEthernet
Modified Date:	Wednesday, June 22, 2005 8:51:13 AM
Project Version:	2.8206
PLC Manufacturer:	
Protocol:	- 1:1 communication
Driver Version:	2.01

Opened Project Information	
Project Name:	Unknown
Modified Date:	Unknown
Version No.:	Unknown

- ▶ At this time, clicking **Target Font Information** enable you to confirm the optional font information now downloaded in the MICRO/I.
- ▶ At this time, clicking **Target CF Card Information** enable you to confirm the status of the CF card inserted into the MICRO/I.

Procedure differences according to the communication setting

Applicable operating procedures at the beginning of the communication depend on the setting.

When selecting **HG1F/2F/2S/3F/4F** for **Communicate with**, and **Ethernet** for **Port**.

1. The Downloader opens the **Target IP Address** dialog box.
2. Specify the target IP address, and then click **OK** button.
3. The Downloader begins to communicate.

When selecting **O/I Link Slaves** for **Communication with**

1. The Downloader opens the **Target Slaves** dialog box.
2. Select target slaves and click **OK** button.
- ⇒ Only when selecting **Ethernet** for **Port**, the Downloader displays **Master IP Address** and “...” button on the edit box. Specify **Target IP Address** here.
3. The Downloader begins to communicate.

6-13 Displaying Version Information

Use the following procedure to display the version information for the Downloader.

1. Select **Help - About** from the menu bar.
2. The Downloader displays the **About Downloader** dialog box.

7 Formatting Log Data

Uploading log data - alarm log data and logging data - enable you to save the CSV file into the specified folder. The format of each log data file is as follows.

7-1 Alarm Log Data

The Downloader creates the file name as “ALMHT.CSV”. The file format is as follows.

<When uploading from the runtime version 1.4>

Row	1st column	2nd column	3rd column	4th column	5th column
0	Project Name	Project Name ¹⁾			
1	File Type	Alarm Log Data			
2					
3	Ch.No.	Message	Occurrence Time	Recovery Time	Confirmation Time
4 or more	Ch.No. ²⁾	Message ²⁾	Occurrence Time ²⁾	Recovery Time ²⁾	Confirmation Time ²⁾

- 1) The project name now downloading into the MICRO/I is written.
- 2) Alarm log data memorized in the MICRO/I are written.

<Data Example>

“Project Name”, “Sample Project”,
 “File Type”, “Alarm Log Data”,

 “Ch.No.”, “ Message”, “Occurrence Time”, “Recovery Time”, ” Confirmation Time”,
 “ 1-0”, ”Message1-0”, ” 03/08/05 17:03”, ” 08/05 17:03”, ”08/05 17:03”,
 “ 2-7”, ”Message2-7”, ” 03/08/05 17:03”, ” 08/05 17:03”, ”08/05 17:03”,
 .
 .
 .

<When uploading from the version from 1.5x to 1.6x>

Row	1st column	2nd column	3rd column	4th column	5th column	6th column
0	Project Name	Project Name¹⁾	Runtime Version			
1	File Type	Alarm Log data				
2						
3	Ch.No.	Message	Occurrence Time	Recovery Time	Confirmation Time	Font Name
4 or more	Ch.No.²⁾	Message²⁾	Occurrence Time²⁾	Recovery Time²⁾	Confirmation Time²⁾	Font Name²⁾

1) The project name now downloading in the MICRO/I is written.

2) Alarm log data memorized in the MICRO/I are written.

<Data Example>

“Project Name”, “Sample Project”, “V1.5xxx”

“File Type”, “Alarm Log Data”

“Ch.No.”, “Message”, “Occurrence Time”, “Recovery Time”, “Confirmation Time”, “Font Name”

“1-0”, “Message1-0”, “03/08/05 17:03”, “08/05 17:03”, “08/05 17:03”, “Japanese”

“2-7”, “Message2-7”, “03/08/05 17:03”, “08/05 17:03”, “08/05 17:03”, “Chinese”

•
•
•

Caution: The “**Font Name**” at the sixth column is to display the message truly in the corresponding language.

Caution: When the numbers of lines are multiple, the Downloader displays only the first line.

<When uploading from the runtime software version 1.7x or later>

Row	1st column	2nd column	3rd column	4th column	5th column	6th column
0	Project Name	Project Name¹⁾	Runtime Version	Project Language		
1	File Type	Alarm Log Data				
2						
3	Ch.No.	Message	Occurrence Time	Recovery Time	Confirmation Time	Font Name
4 or more	Ch.No.²⁾	Message²⁾	Occurrence Time²⁾	Recovery Time²⁾	Confirmation Time²⁾	Font Name²⁾

1) The project name now downloading in the MICRO/I is written.

2) Alarm log data memorized in the MICRO/I are written.

<Data Example>

"Project Name", "Sample Project", "V1.7xxx", "European" "File Type", "Alarm Log Data" "Ch.No.", "Message", "Occurrence Time", "Recovery Time", "Confirmation Time", "Font Name" "1-0", "Message1-0", "03/08/05 17:03", "08/05 17:03", "08/05 17:03", "Japanese" "2-7", "Message2-7", "03/08/05 17:03", "08/05 17:03", "08/05 17:03", "Chinese" . . .

Caution: The "**Font Name**" at the sixth column is used to display the message truly in the corresponding language.

7-2 Logging Data

The Downloader creates the file name as "LOG##.CSV". The symbol of "##" is correspond to the Device Log No. from 01 to 20 set in **Logging Settings...**

<When uploading from the runtime software version from 1.4x to 1.6x>

Row	1st column	2nd column
0	Project Name	Project Name¹⁾
1	File Type	Logging Data
2		
3	Device Log No.	Device Log No.²⁾
4	Source	Source³⁾
5	Sampling Method	Sampling method⁴⁾
6	Device ----- Time (sec)	Device⁵⁾ Time (sec)⁶⁾
7		
8	Data	Sampling Time
9	Data⁷⁾	Sampling Time⁷⁾
or more		

- 1) The project name now downloading in the MICRO/I is written.
- 2) The Device Log No. set in **Logging Settings...** is written.
- 3) The Source set in **Logging Settings...** is written.
- 4) The sampling method set in **Logging Settings...** is written.
- 5) When selecting "Event Bit" or "Event Word" in the sampling method setting, the device set in **Logging Settings...** are written.
- 6) When setting the sampling method to the fixed period, the period set in **Logging Settings...** is written.
- 7) Logging data memorized in the MICRO/I are written

<Data Example>

"Project Name", "Sample Project",
"File Type", "Logging time",

"Device Log No.", "1",
"Source", "LSD 00000010",
"Sampling method", "Event Word",
"Device", "LSD 00000011",

"Data", "Sampling Time",
495, "03/08/08 08:37:04",
1033, "03/08/08 08:37:05",

·
·
·

<When uploading from version 1.7x>

Row	1st column	2nd column	3rd column	4th column
0	Project Name	Project Name¹⁾	Runtime version	Project Language
1	File Type	Logging Data		
2				
3	Device Log No.	Device Log No.²⁾		
4	Source	Source³⁾		
5	Sampling method	Sampling method⁴⁾		

6	Device Time (sec)	Device ⁵⁾ Time (sec) ⁶⁾		
7				
8	Data	Time (sec)		
9 or more	Data ⁷⁾	Time (sec) ⁷⁾		

- 1) The project name downloaded in the MICRO/I is written.
- 2) The Device Log No. set in **Logging Settings...** is written.
- 3) The source set in **Logging Settings...** is written.
- 4) The sampling method set in **Logging Settings...** is written.
- 5) When the sampling method is “**Event Bit**” or “**Event Word**,” the device set in **Logging Settings...** is written.
- 6) When setting the sampling method to the fixed period, the period set in **Logging Settings...** is written.
- 7) Logging data memorized in the MICRO/I are written.

<Data Example>

“Project Name “, ” Sample Project “, ”V1.7xxx”, ”European”
“File Type “, ” Logging Data “,

“Device Log No. “, ”1”,
“Source”, ”LSD 00000010”,
“Sampling method “, ”Event Word”,
“Device “, “LSD 00000011”,

“Data”, ” Sampling Time”,
495, ” 03/08/08 08:37:04”,
1033, ” 03/08/08 08:37:05”,

•
•
•

<When uploading from the version 1.8 or later>

Row	1st column	2nd column	3rd column	4th column
0	Project Name	Project Name ¹⁾	Runtime Version	Project Language
1	File Type	Logging Data		
2				
3	Logging No.	Logging No. ²⁾		
4	Source	Source ³⁾		
5	Sampling method	Sampling method ⁴⁾		
6	Device	Device ⁵⁾		
	Time (sec)	Time (sec) ⁶⁾		
7	Title Font	Title Font ⁷⁾		
8				
9	Sampling Time	Data Title
10 or more	Sampling Time ⁸⁾	Data ⁸⁾

- 1) The project name downloaded in the MICRO/I is written.
- 2) The Device Log No. set in **Logging Settings...** is written.
- 3) The source set in **Logging Settings...** is written.
- 4) The sampling method set in **Logging Settings...** is written.
- 5) When Sampling method is “**Event Bit**” or “**Event Word**”, the device set in **Logging Settings...** is written.
- 6) When setting the sampling method to the fixed period, the period set in **Logging Settings...** is written.
- 7) The font name of the data title specified in the project is written. The Downloader displays the data title at the ninth column in this language.
- 8) The device value of each channel specified in the project is written.

<Data Example>

```

“Project Name”, “Sample Project “,”V1.8xxx”, “European”
“File Type”, “Logging Data”,

“Logging No.”, “1”,
“Source”, “LSD 00000010”,
“Sampling method”, “Event Word”,
“Device”, “LSD 00000011”,
“Title Font”, “Japanese”,

“Sampling Time”, “Data1”, “Data2”, “...” , “Data128” ,
“03/08/08 08:37:04”, 495 , 505 , “...” , 1045 ,
“03/08/08 08:37:05”, 1033 , 1068 , “...” , 5043 ,
.
.
.

```

8 Download Options

It is explained here how to download the runtime software and the optional font at the same time in downloading the project. These settings are done when making project data for the Downloader not in the Downloader but in the WindO/I-NV2.

Use the following operations to set download options.

(The following example is when selecting **HG1F/2F/2S/3F/4F** for **Communication with**, and **COM Port** or **USB** for **Port**.)

1. Select **Online - Save AS Project Data for Downloader...** from the menu of the WindO/I-NV2.
 2. Click **Options...** on the **Download** dialog box.
 3. After displaying the **Download Option** dialog box, select the information you want to add.
 4. When downloading the runtime software, check the box of **Download Runtime system**.
 5. When downloading the optional font, check the box of **Download optional fonts**. Then check the box of font you want to download.
- ⇒ At this time, if the Downloader can communicate with the MICRO/I, clicking **Target Font Information** enables you to confirm the font information in the MICRO/I.
6. Clicking **OK** button will terminate the setting. However, if you check the box in the step 4., the Downloader displays the confirmation message whether you want to download the runtime software compulsorily or not. At this time, select **Yes** button.
 7. Clicking **Download** button enables you to open the **Save As Project Data for Downloader** dialog box. Then specify the place or the folder to save the data and click **Save** button.
 8. Click **Yes** button to authorize the confirmation message for formatting.
 9. The Downloader begins to format and displays the progress indicator.
 10. After finishing the format, click **Close** button.

Procedure differences according to the communication setting

Applicable operating procedures at the beginning of the communication depend on the setting.

When selecting the **HG1F/2F/2S/3F/4F** for the **Communication with**, and **Ethernet** for **Port**.

1. The Downloader opens the **Target IP Address** dialog box.
2. Specify the target IP address and then click **OK** button.
3. The Downloader begins to download.

When selecting **O/I Link Slaves** for **Communication with**

1. The Downloader opens the **Target Slaves** dialog box.
 2. Select the target slaves and then click **OK** button.
- ⇒ Only when selecting **Ethernet** for **Port**, the Downloader displays the **Master IP Address** and "... " button on the edit box. Specify the target IP address here.
3. The Downloader begins to download.

Caution: When turning the box of **Download Runtime system** off, the Downloader does not download the runtime software. On this account, if the version of following two software is not equal, you cannot download the project.

1. The runtime software loaded in the WindO/I-NV2 on which the project is made
2. The runtime software downloaded to the MICRO/I for which the download is targeted.

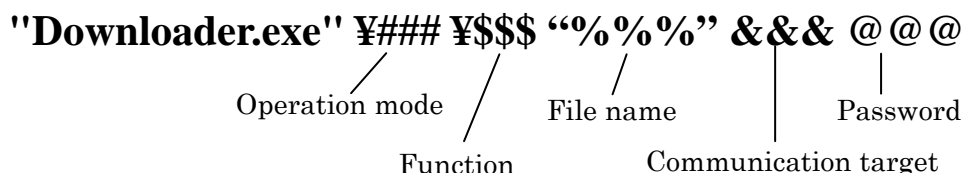
Caution: When turning the check box of **Download optional fonts** on, and the check box of each font options off, the Downloader deletes the turn-off fonts after downloading the project.

Caution: When you download the Project Data to CF Card, the Project data must contain runtime software and optional font.
When you make a Project Data to download, check the box of **Download Runtime system** and **Download optional fonts**.

9 Utilizing from Another Software

The Downloader enables you to utilize the function of the Downloader from another software. Executing the executable file for the Downloader through command line, attaching the parameter corresponding to each Downloader's function, enables you to perform various types of Downloader's functions.

Command line combines two or more command and makes Downloader function. The format of the command line is as follows.



It explains each function here.

Operation mode

"Downloader.exe" ¥### ¥\$\$\$ “%%%" &&& @@@

It is an Operation type when the Downloader executes commands .

The command line has two types of modes

Types	Parameter	
Normal mode	¥normal	The Downloader executes commands showing only the dialog boxes of each functions or messages instead of the main window.
Silent mode	¥silent	The Downloader executes only commands without any showing of dialog boxes and messages. At this time, the Downloader records messages or statuses shown through the normal commanding procedure to the log file, and creates as a file in the folder in which the Downloader is installed. The Downloader overwrites this log file whenever communicating. After completing the communication, complete.flg file is yielded. You can identify the completion of the communication with the file. But this file is deleted automatically.

This parameter setting is indispensable

¥ must be put in front of [normal] or [silent].

Function

"Downloader.exe" ¥### ¥\$\$\$ “%%%" &&& @@@

Executes Downloader's menu functions

For more information on each parameter , see the **9-1 functions**.

File name

"Downloader.exe" ¥### ¥\$\$\$ “%%%" &&& @@@

Specifies the data file name or the folder for the download or the upload.

Specify the file name or the destination folder position by the absolute path.

Encloses the absolute path in double quotation(" ") of normal-width.

Function	Parameter	
When download	"C:¥USERDATA¥SamplePloject.z3f"	Specify the file name
When upload	"C:¥USERDATA¥uploaddata"	Specify the destination folder

		for upload
--	--	------------

The folder name or folder path inside “” is one example.

The parameter is unnecessary to specify the download file name or upload destination folder.

In this case, before communicating ,a dialog box that specifies a file name or specifies upload destination folder is opened.

It is indispensable the parameter in the silent mode.

When you download the Recipe data, this parameter enables you to specify multiple files.

Separates each file with space.

Each file must be separated by a space of normal-width.

Also you can specify files using the wild card - *.CSV , this enables you to download all file that exists in specified folder at a time .

Communication target

“Downloader.exe” ¥### ¥\$\$\$ “%%%” &&& @@@

Specifies the target IP addresses and slave numbers.

The parameter depends on Communication port as follows.

Communication target	Communication port	Parameter	
MICRO/I	COM	Unnecessary	The parameter is unnecessary.
	USB		
	Ethernet	192.168.1.15	Specify the target IP address Multiple targets are available.
	Ethernet (via Web Server Unit)	192.168.1.1. 2101	Specify the target IP address and Port No. Multiple targets are available.
O/I Link	COM	Slave1 Slave14 Slave15	Specify the target Slave No. Multiple targets are available.
	USB		
	Ethernet	Slave5 192.22.3.3 Slave10 22.125.1.1	Specify the target Slave No. and IP address. Multiple targets are available.
	Ethernet (via Web Server Unit)	Slave2 192.168.1.1.2101	Specify the target Slave No., IP address and Port No. (Space is unnecessary between IP address and Port No.) Multiple targets are available.
CF Card		CF	

The parameter is one example.

When Communication target is multiple, separate the parameter by a space of normal-width.

The parameter is unnecessary to specify the IP address and the slaves of target communication at any time in the dialog box

it is indispensable the parameter in the silent mode.

Password

“Downloader.exe” ¥### ¥\$\$\$ “%%%” &&& @@@

When the connecting MICRO/I has a password setting, the Downloader checks the input password for the parameter automatically.

	Parameter	
Password	pass-@@@ (@@@: password)	Multiple passwords can be input. When multiple passwords are specified, separates the parameter by a space of normal-width.

When password is set to MICRO/I and the parameter is not set ,the Enter Password dialog box is opened.

When the parameter is not correct, the Enter Password dialog box is opened. This is operation at a normal mode. The log of the error remains in the log file at the silent mode.

It is indispensable the parameter in the silent mode.

9-1 Function

It explains the parameter of the Function in detail.

“Downloader.exe” ¥### ¥\$\$\$ “%%” && @@@

Download

Function	Parameter
Project Data for Downloader	¥download -P
Project Data for CF Card	¥download -C

Upload

Function	Parameter
Project Data	¥upload -P
Project Data and Font Data	¥upload -PF
Project Data and Runtime	¥upload -PR
Project Data and Recipe Data in CF Card	¥upload -P -R
Project Data and Picture Data in CF Card	¥upload -P -C
Multiple Data	
Project Data, Font Data and Runtime	¥upload -PRF
Project Data, Runtime and Recipe Data	¥upload -PR -R
Project Data, Runtime, Recipe Data and Picture Data	¥upload -PR -R -C
All Log Data	¥upload -ALL
Alarm Log Data	¥upload -A
Logging Data	¥upload -L

Example:

“Downloader.exe” ¥normal ¥upload -PF “C¥Administrator¥Downloader¥SampleProgram”

“Downloader.exe” ¥silent ¥upload -A “C¥Administrator¥Uploaddata” 192.233.5.15

“Downloader.exe” ¥silent ¥upload -A “C¥Administrator¥Uploaddata” Slave2 pass-1234

Initialization

Function	Parameter
All Log Data	¥initialize -ALL
Alarm Log Data	¥initialize -A
Logging Data	¥initialize -L

In this Function, there is no parameter to specify File Name.

CF Card Maintenance

Function	Parameter
Download	
Download Project Data	¥cf_download -P
Download Recipe Data	¥cf_download -R
Download Recipe Data while running	¥cf_download -U

When “Communication with” is O/I Link Slaves in Communication Settings, you can not download recipe data while running. If you execute this command, it will be failed while communicating.

Upload	
Alarm Log Data	¥cf_upload -A
Logging Data	¥cf_upload -L
Recipe Data	¥cf_upload -R
Screen Hardcopy Data	¥cf_upload -S
All Data	¥cf_upload -ALL

Multiple Data	
Alarm Log Data and Recipe Data	¥cf_upload -A-R

Initialize	
Alarm Log Data	¥cf_initialize -A
Logging Data	¥cf_initialize -L
Recipe Data	¥cf_initialize -R
Screen Hardcopy Data	¥cf_initialize -S
Project Data	¥cf_initialize -P
All Data	¥cf_initialize -ALL
Multiple Data	
Logging Data and Recipe Data	¥cf_initialize -L-R
Format	¥cf_format

In Initialize function, there is no parameter to specify File name.

Example:

“Downloader.exe” ¥normal ¥cf_download -R “C:¥HGDATA01¥RECIPE¥RCP001.CSV RCP0012.CSV RCP0017.CSV”

“Downloader.exe” ¥normal ¥cf_download -R “C:¥HGDATA01¥RECIPE¥*.CSV” 192.168.22.3

“Downloader.exe” ¥normal ¥cf_initialize -L-R Slave1 192.168.22.3 pass-ab12

Option

Function	Parameter
Change Picture Data	
Picture in Project Data for Downloader	¥change_picture -P
Picture uploaded from HG	¥change_picture - U
Change Text Data	
Text in Project Data for Downloader	¥change_text -P
Text uploaded from HG	¥change_text - U
Read Device Data	¥read_[DDD]_NNN DDD: Device Address NNN: Number of Data
Write Device data	¥write_[DDD]_NNN -R DDD: Device Address NNN: Number of Data -R: When don't reset MICRO/I, this parameter isn't required.
System Settings	“Downloader.exe” ¥target &&&
Communication Settings	“Downloader.exe” ¥settings

Example:

“Downloader.exe” ¥normal ¥change_picture -U

“Downloader.exe” ¥normal ¥change_text -P “C:¥WINDOINV2¥Project1.z2f” 192.168.22.3

“Downloader.exe” ¥normal ¥read_[LDR 20]_30 “C:¥WINDOINV2¥ReadData.csv” Slave1 192.168.22.3 pass-ab12

9-2 Use in Another Software

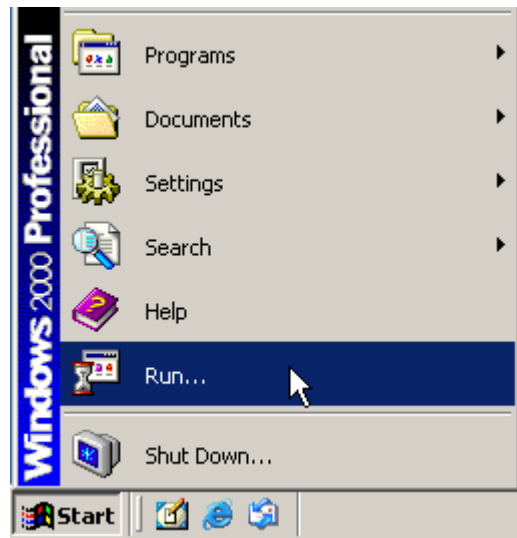
It explains concrete use in another software.

Software often used

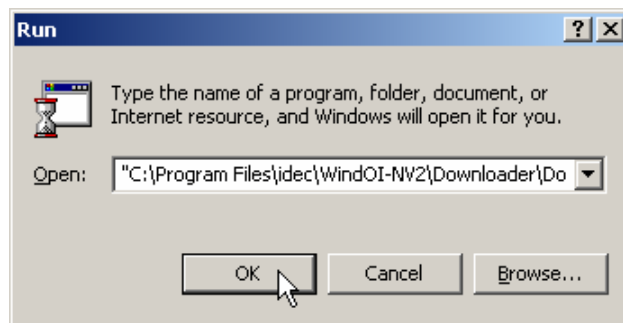
- Run...
- Power Point
- Excel

9-2-1 Using from Run...

- ① Starts Run... from Start menu of your PC



- ② Type the following command to the edit box of "Open",
"C:\Program Files\idec\WindOI-NV2\Downloader\Downloader.exe" /normal /download -P
C:\Program Files\idec\WindOI-NV2\Downloader\UserData\sampleprojectz4f".
And then click [OK] button.
This command downloads "sampleprojectz4f" project data that exists in "C:\Program
Files\idec\WindOI-NV2\Downloader\UserData" in a Normal mode.



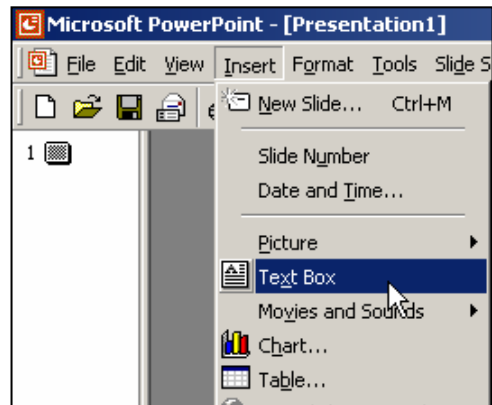
Caution: Start of the command, the path of "Downloader.exe" must be input the absolute path.

- ③ Download is executed.

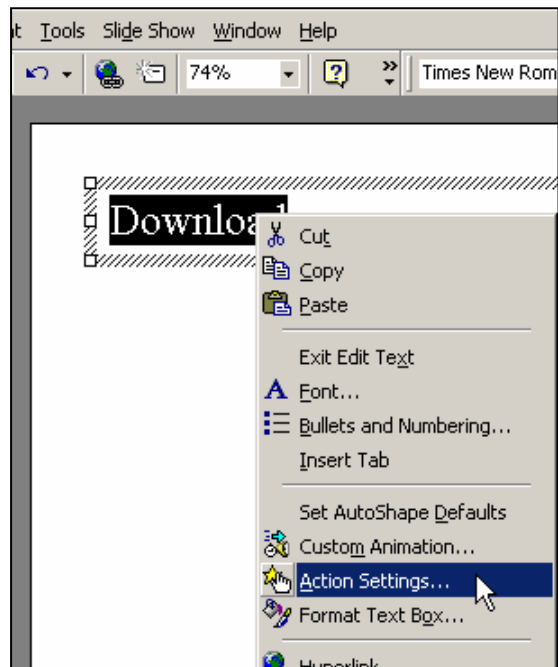
9-2-2 Using from Power Point

In Power Point, the command is executed by mouse clicking or passing over the character with mouse.

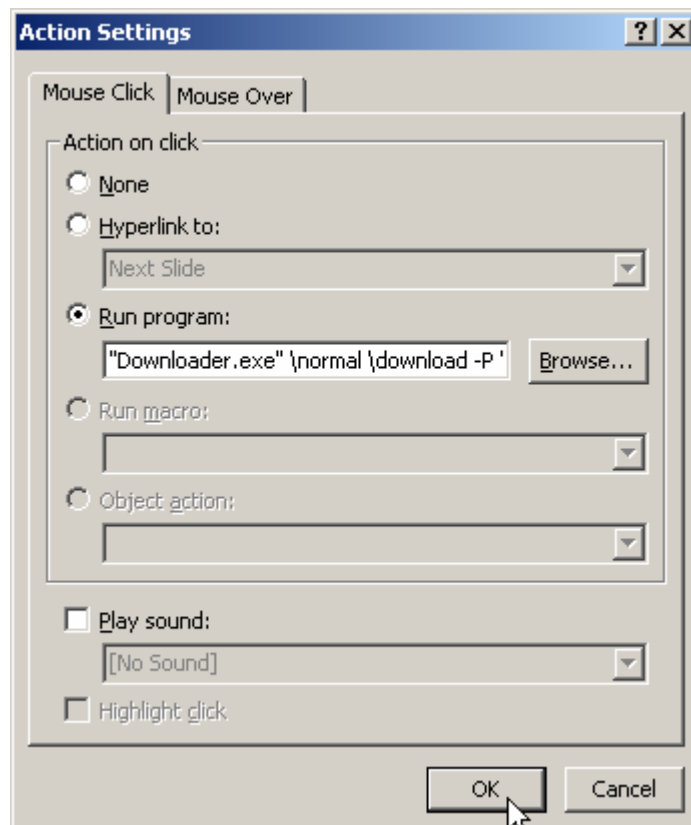
- ① Start Power Point
- ② Create new slide.
- ③ Select [Insert]-[Text Box] from the menu bar, and put a text box on the slide.



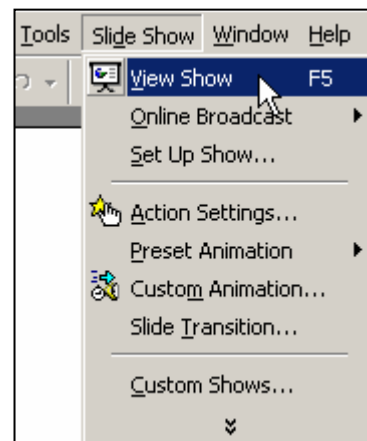
- ④ Type "Download" to the text box.
- ⑤ Select [Action Settings...] of Context menu. Then [Action Settings] dialog box opens.



- ⑥ Check [Run Program...] radio button and input the command to its edit box.
(In this example, Mouse Click is trigger condition.)



- ⑦ Select [Slide Show]-[View Show] from the menu bar.

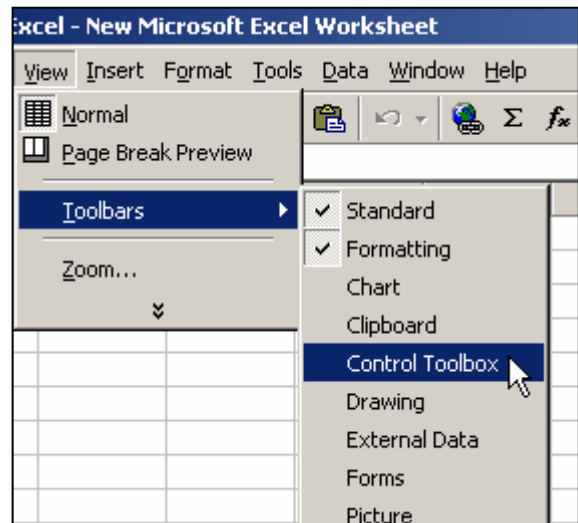


- ⑧ Click the character in slide show screen, and then command is executed.

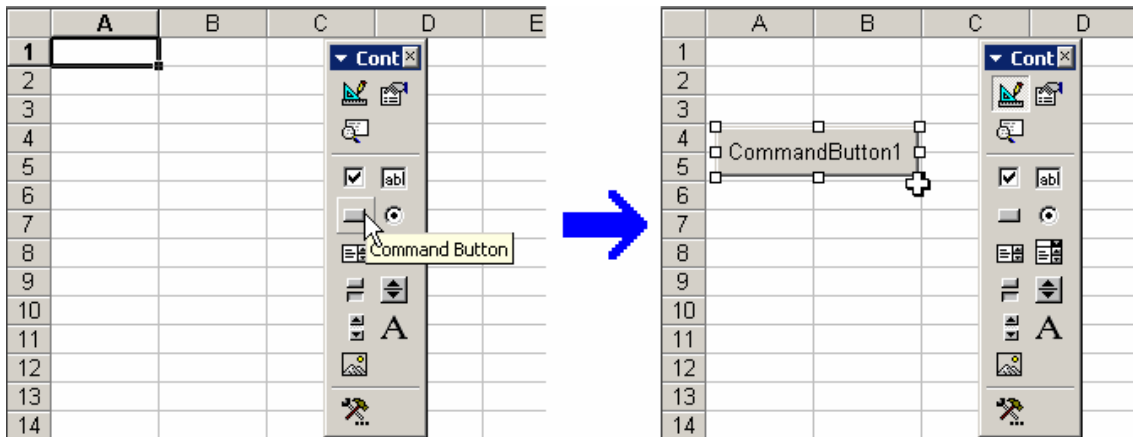
9-2-3 Using from Excel

In Excel, the command is executed with Macro for Visual Basic.

- ① Starting Excel.
- ② Select [View]-[Toolbars]-[Control Toolbox] from the menu bar.
→[Control Toolbox] toolbar is displayed.



- ③ Select [Command Button], and then put a button on the screen.



- ④ Double clicking the[Command Button1]
→Then Code window of Visual Basic opens.

- ▶ [Shell] function is used to starting another software(in here, it is Downloader) from Visual Basic.

Shell (pathname [, windowstyle])

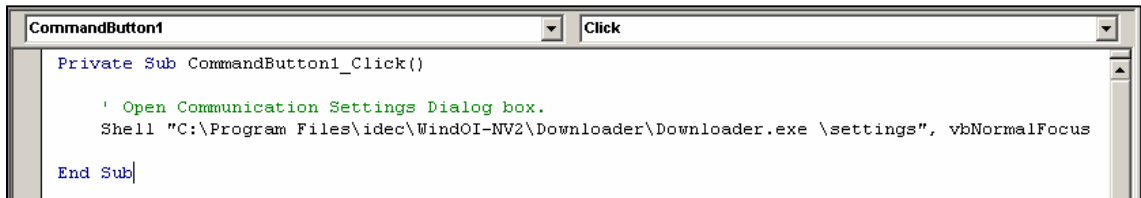
(In here,vbNormalFocus is used for windowstyle.)

- ⑤ Type the following code in procedure of [Private Sub CommandButton1_Click()]

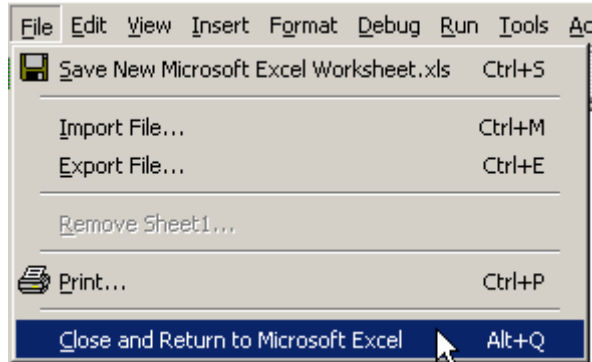
```
Private Sub CommandButton1_Click()

    ' Open Communication Settings dialog box.
    Shell "C:\Program Files\idec\WindOI-NV2\Downloader\Downloader.exe \settings", vbNormalFocus

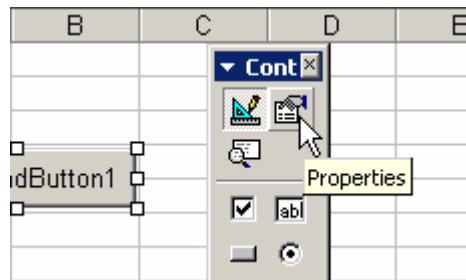
End Sub
```



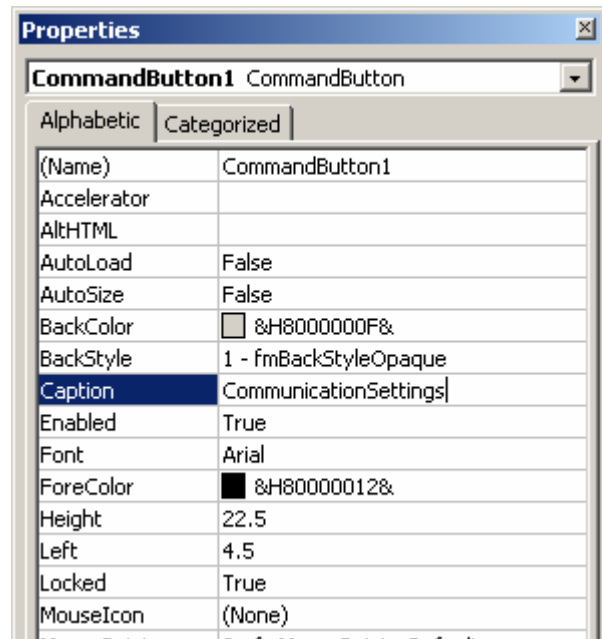
- ⑥ Click upper right [X] button of Code window or select [File]-[Close and Return to Microsoft Excel] from the menu bar.



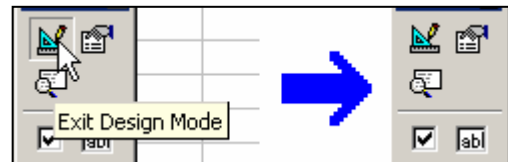
- ⑦ When [CommandButton1] is selected, click [Properties] button in the tool bar.
→then Properties window opens.



- ⑧ Close the window after changing [Command Button1] of [Caption] to [Communication Settings]



- ⑨ Click [Exit Design Mode] button.



- ⑩ Click [Communication Settings] button, then the command is executed and Communication Settings dialog opens.