

## WindLGC Ver.6.2 Upgrade Procedure

If you have WindLGC Ver.6.1 or the older version, you can upgrade it to Ver.6.2.

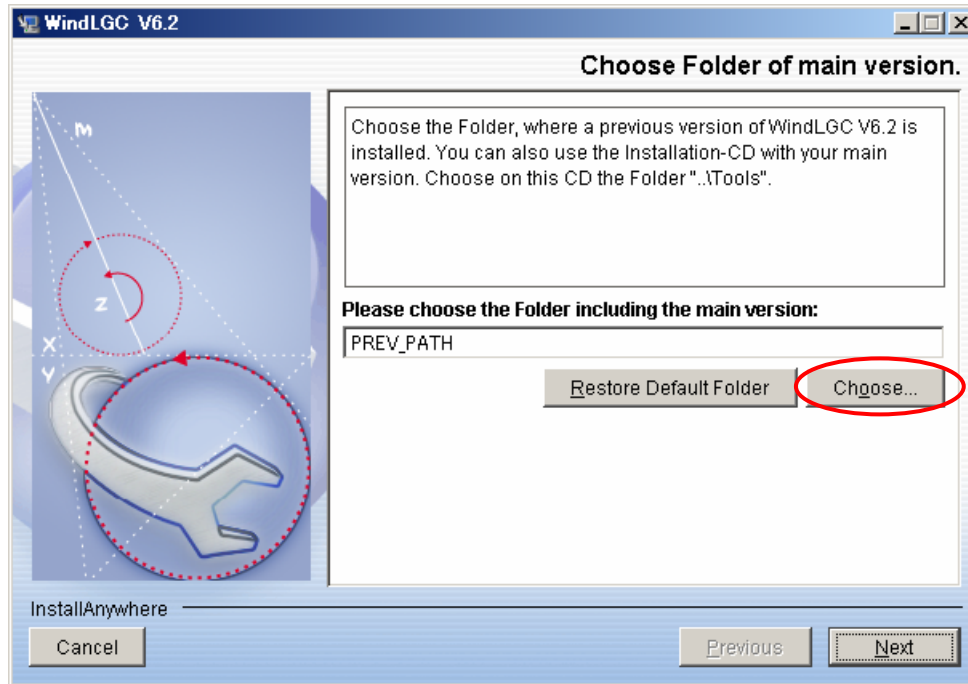
### Step-by-Step Instructions:

<Notes> If you want to install this upgrade software to the PC which WindLGC has been already installed, please refer page 5.

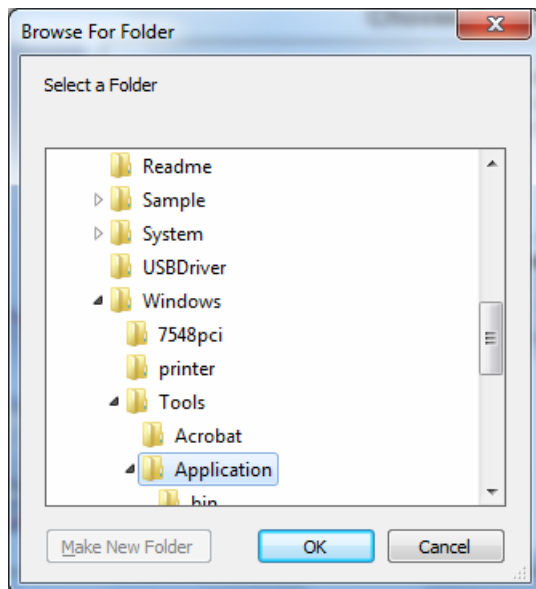
1. Insert WindLGC CD for Ver.6.1 or the older version into CD drive.
2. Execute the following upgrade software downloaded from our IDEC web site.  
when your PC's OS is 32 bit: WindLGC\_Upgrade32\_V620.exe  
when your PC's OS is 64 bit: WindLGC\_Upgrade64\_V620.exe
3. Select Language then click **OK** after opening the following screen.



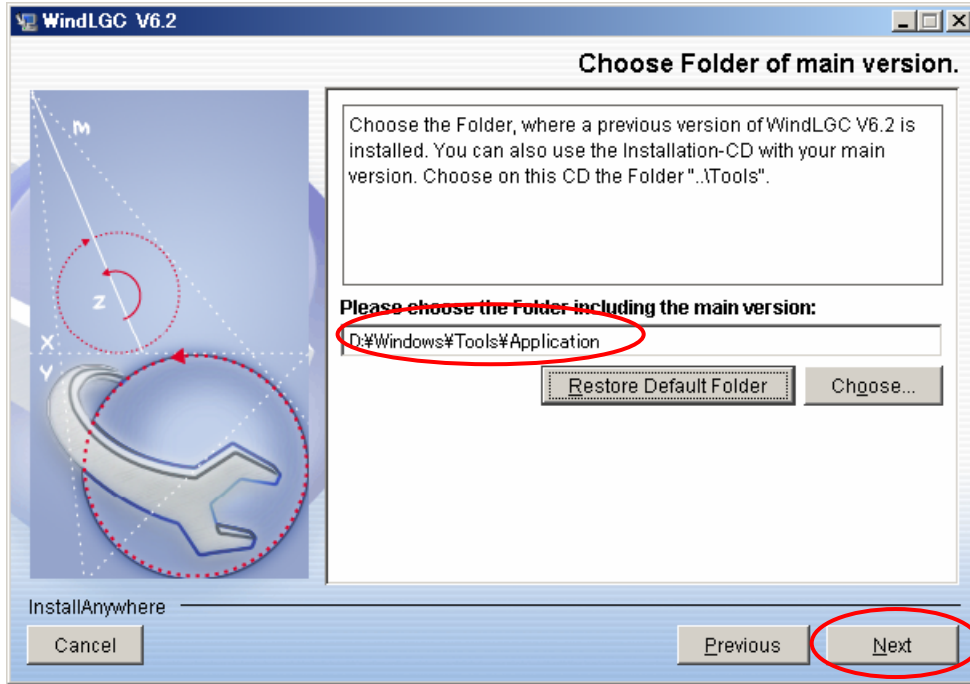
4. Click **Choose** on the following screen after opening the screen.



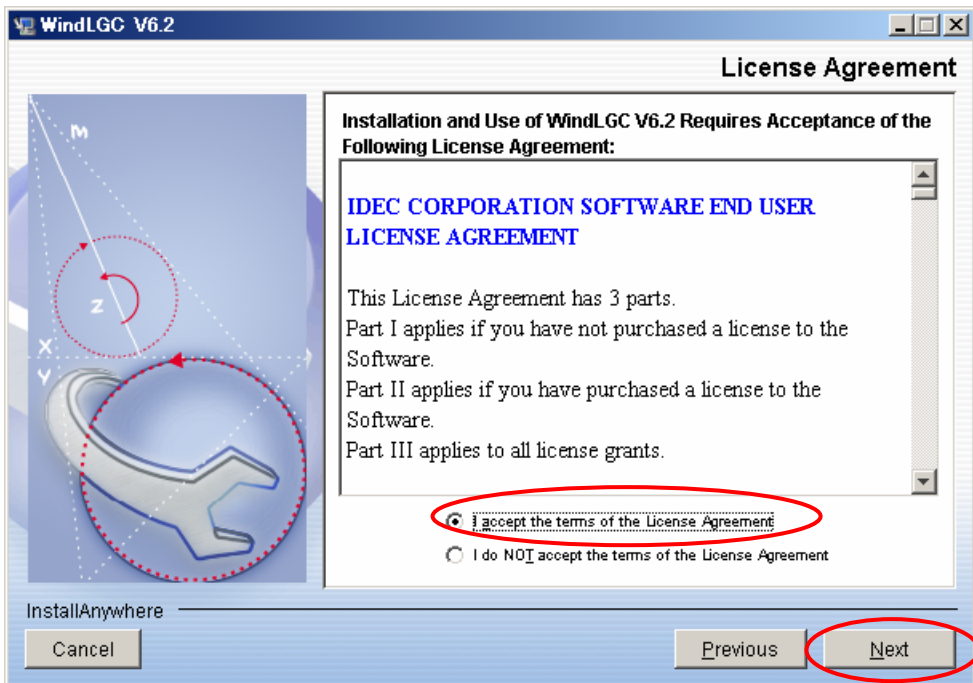
5. Select "Windows¥Tools¥Application" folder in WindLGC CD inserted into CD drive then click **OK**.



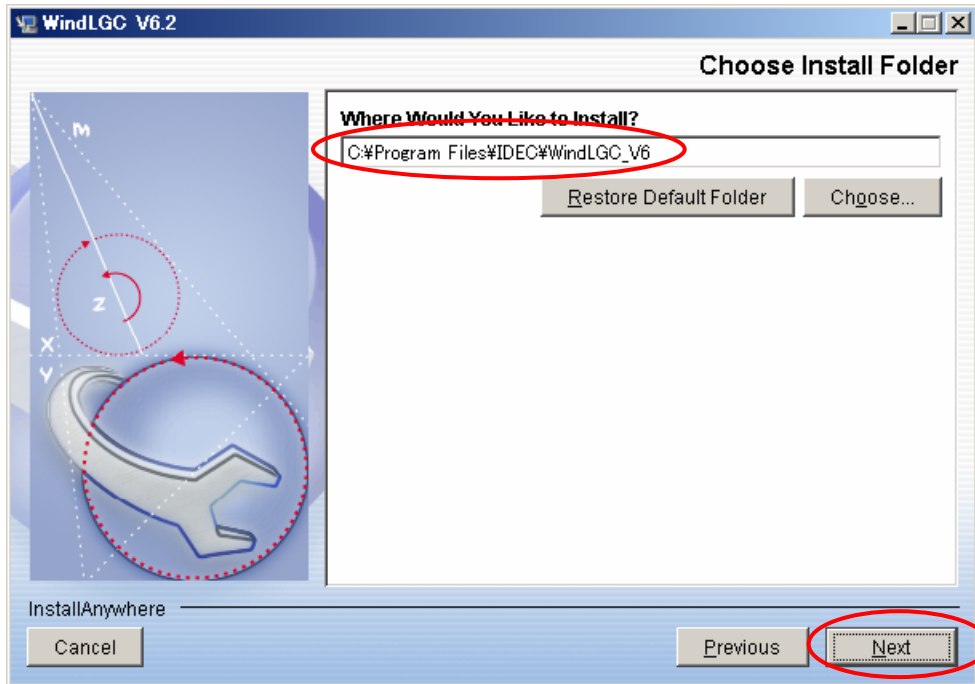
6. Confirm that "Application" folder is selected then click **Next**.



7. If you can accept the following License Agreement, select "I accept the terms of the License Agreement" then click **Next**.



8. Enter the location where you want to install then click **Next**.



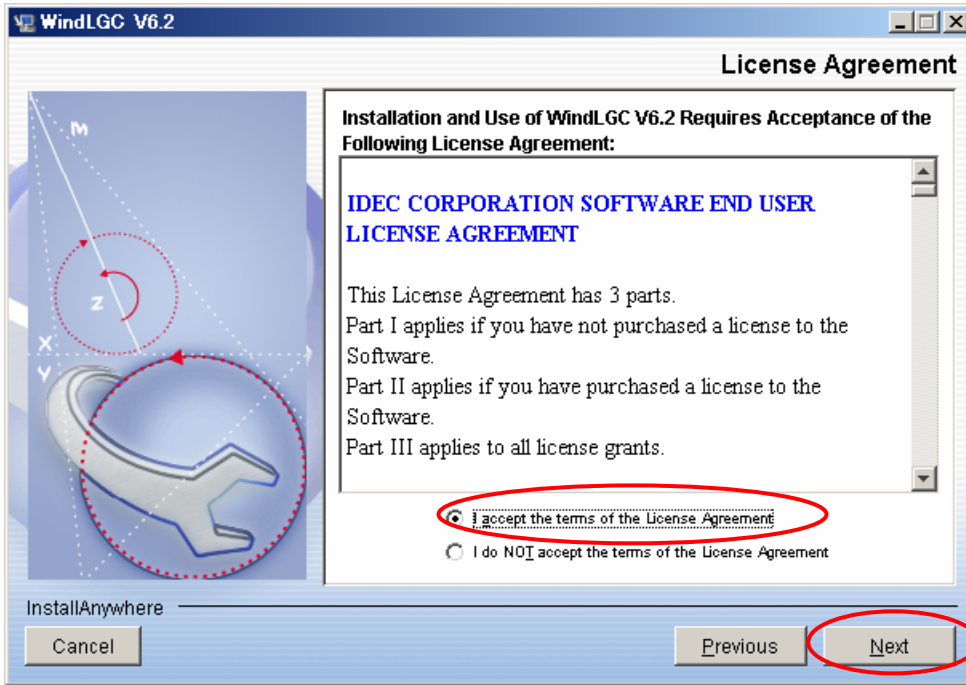
9. Install this software with following the procedure on the opened screens.

<when you want to install this upgrade software to the PC which WindLGC has been already installed>

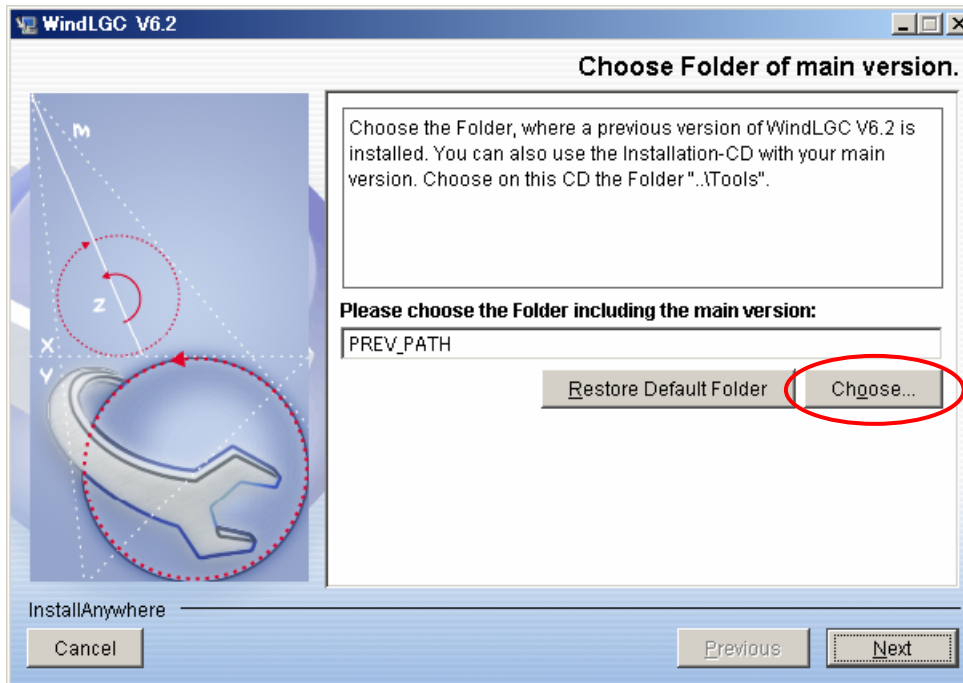
1. Execute the following upgrade software downloaded from our IDEC web site.  
when your PC's OS is 32 bit: WindLGC\_Upgrade32\_V620.exe  
when your PC's OS is 64 bit: WindLGC\_Upgrade64\_V620.exe
2. Select Language then click **OK** after opening the following screen. Start searching whether WindLGC has been already installed.



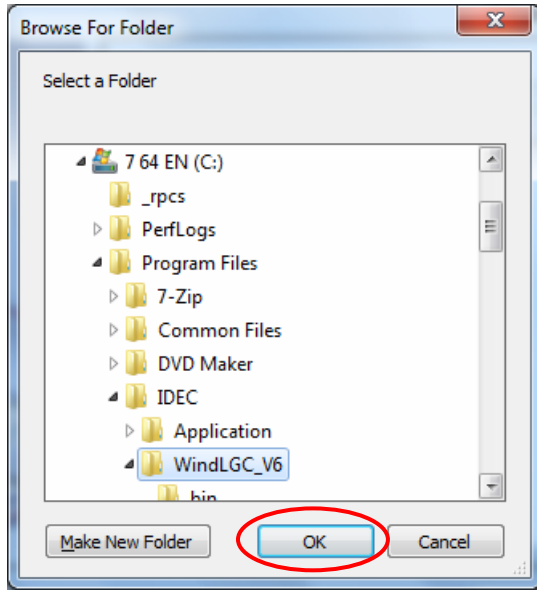
3. If this installer finds WindLGC old version, the following screen is opened. If you can accept the following License Agreement, select "I accept the terms of the License Agreement" then click **Next**. (Go to step 5.)



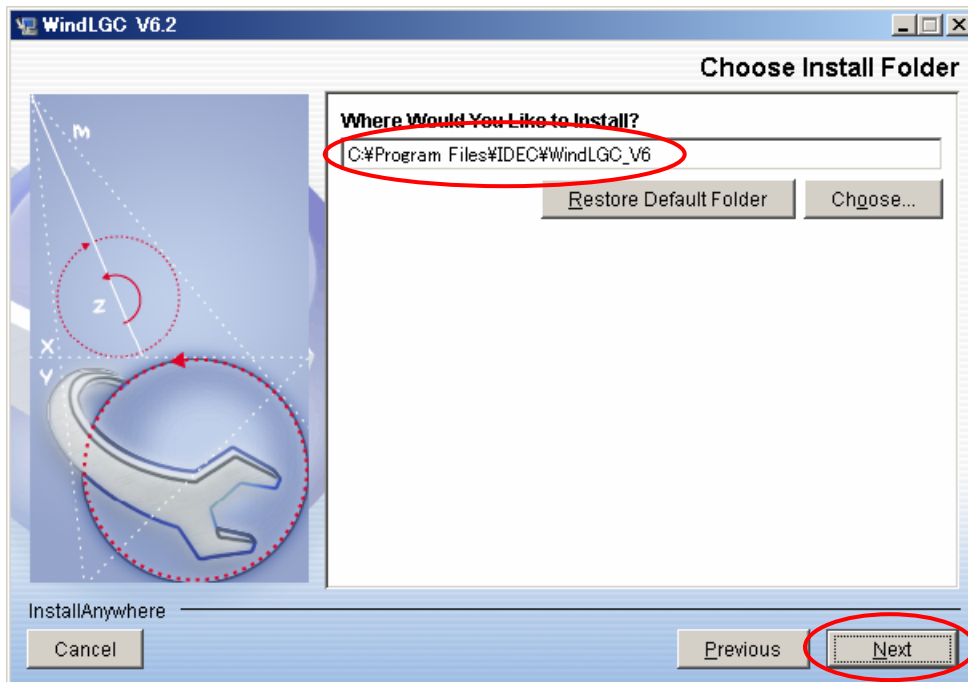
4. If this installer can't find WindLGC old version, the following screen is opened. Then click **Choose**.



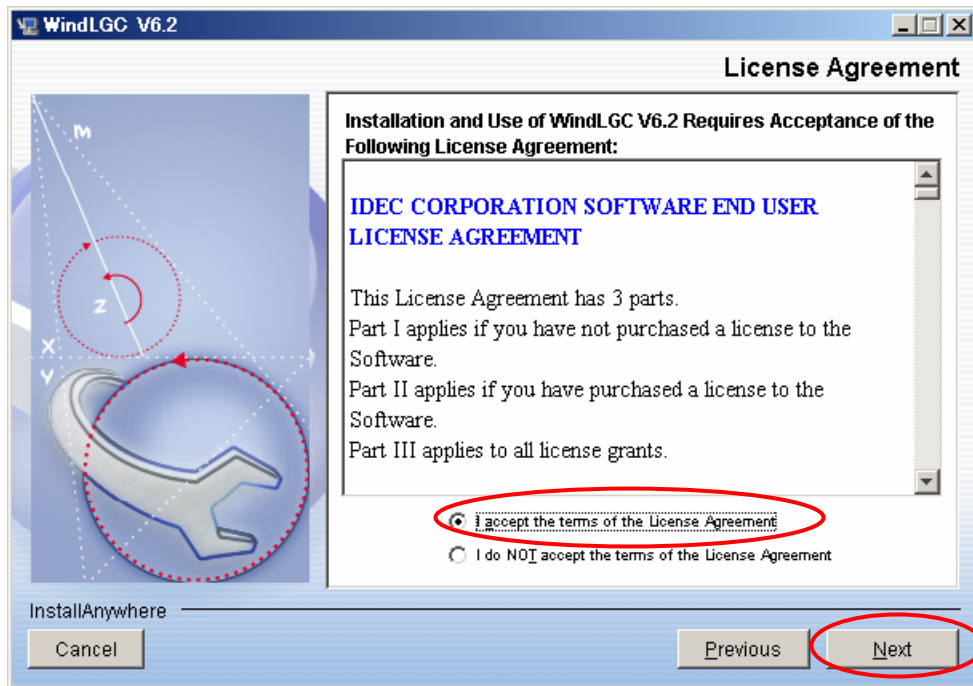
(4.1) Select WindLGC folder already installed in your PC then click **OK**.



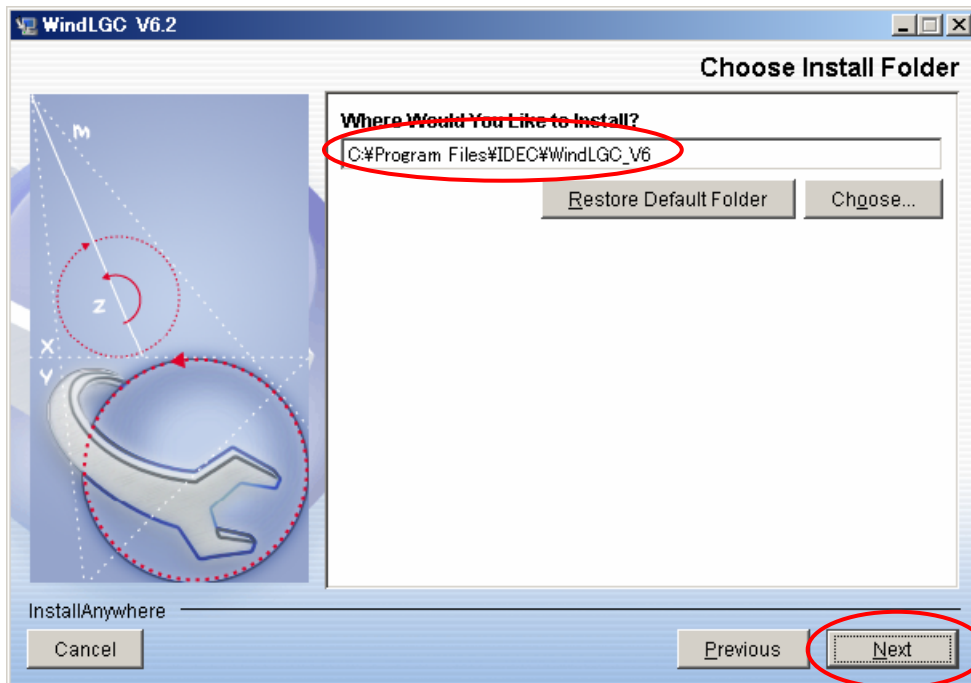
(4.2) Confirm that WindLGC folder already installed is selected then click **Next**.



- (4.3) If you can accept the following License Agreement, select “I accept the terms of the License Agreement” then click **Next**.



5. Enter the location where you want to install then click **Next**.



6. Install this software with following the procedure on the opened screens.