

INSTRUCTIONS

How to Move WindO/I-NV2 (older versions) to a Different Directory

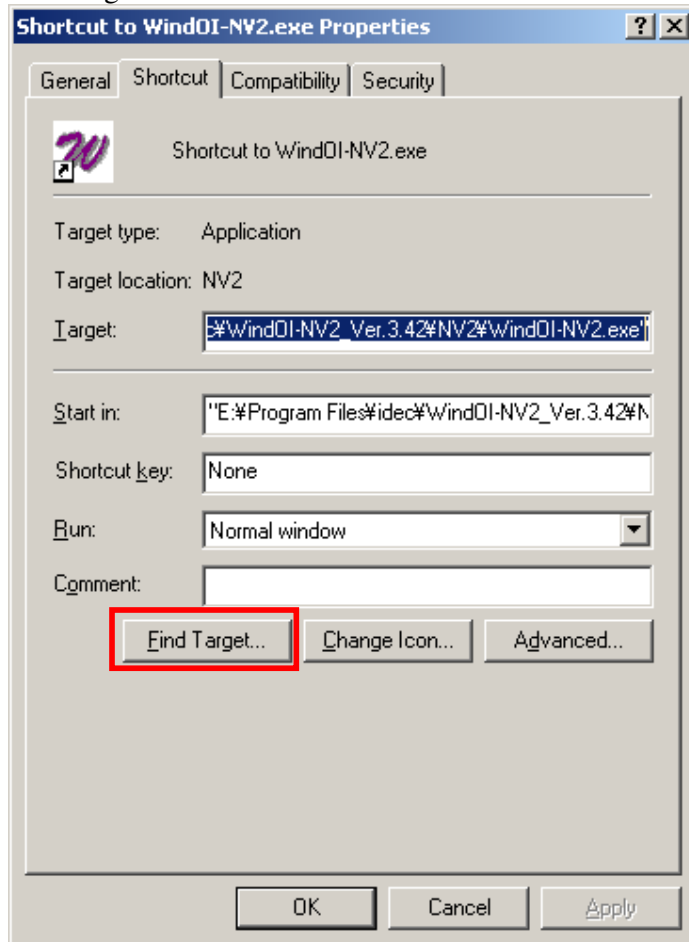


OVERVIEW:

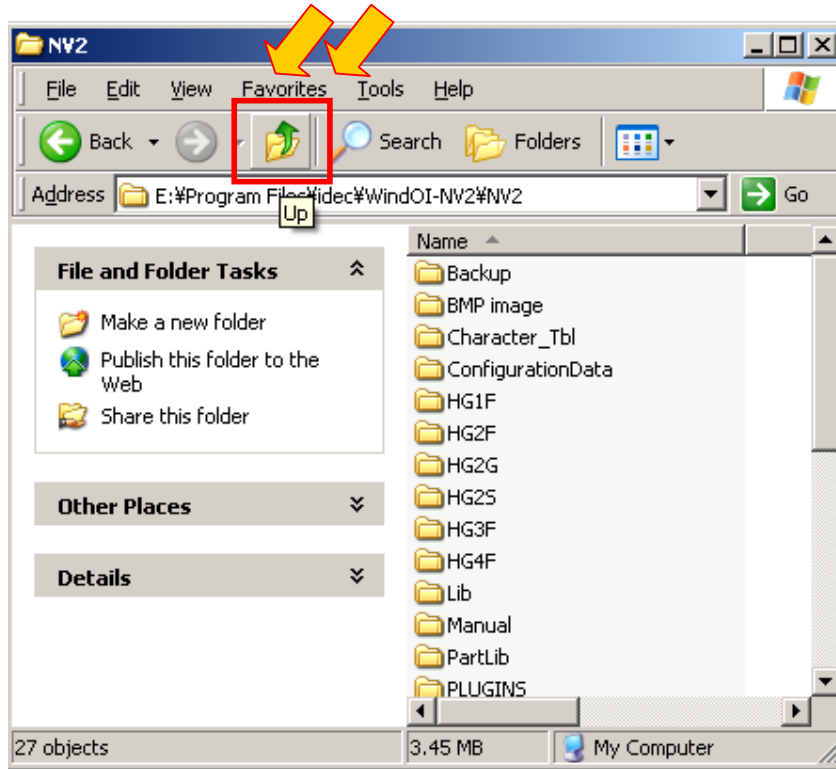
Prior to installing WindO/I-NV2 from Automation Organizer Software Suite, you have the option to keep your older version of WindO/I-NV2 by moving the entire file and launching it from a different directory in your PC. The instructions below will help you through the process. After successfully moving it to a different directory, you may now install WindO/I-NV2 from Automation Organizer suite.

DIRECTIONS:

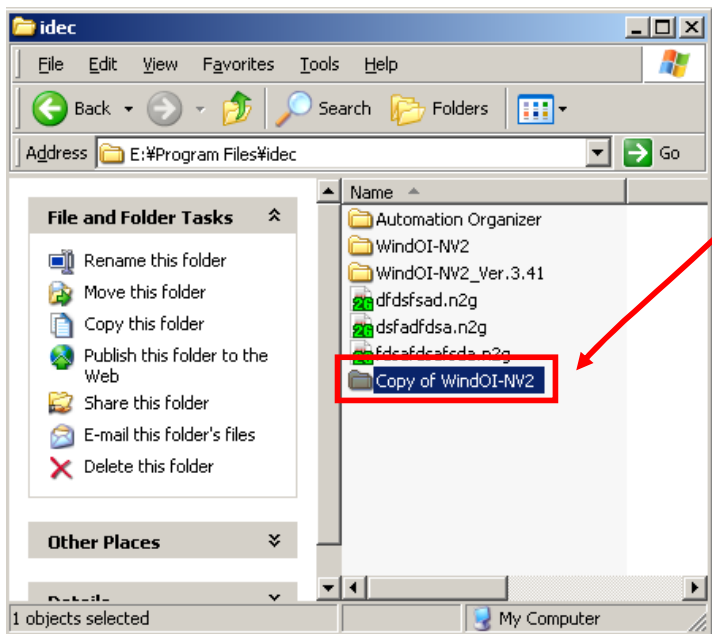
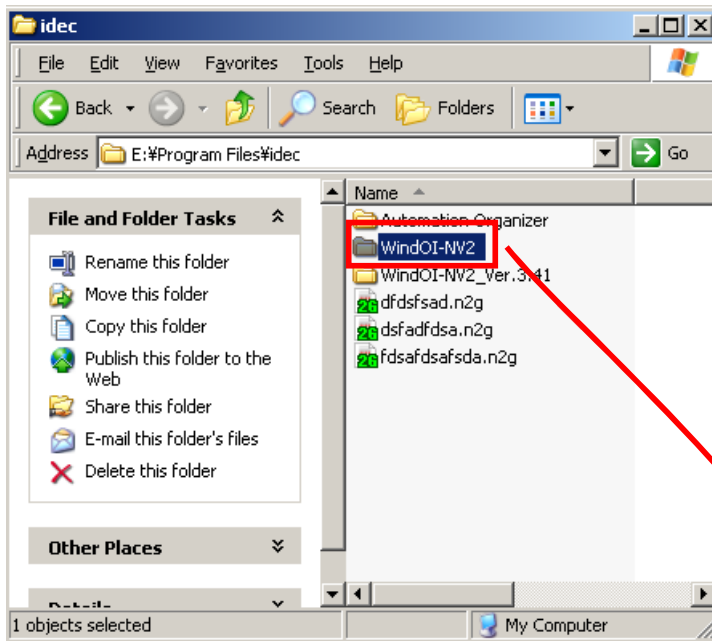
Step 1. Right Click on WindO/I-NV2 Icon , select “Properties”, and then click “Find Target”.



Step 2. Click the “Up” icon twice to take you to the “idec” folder.



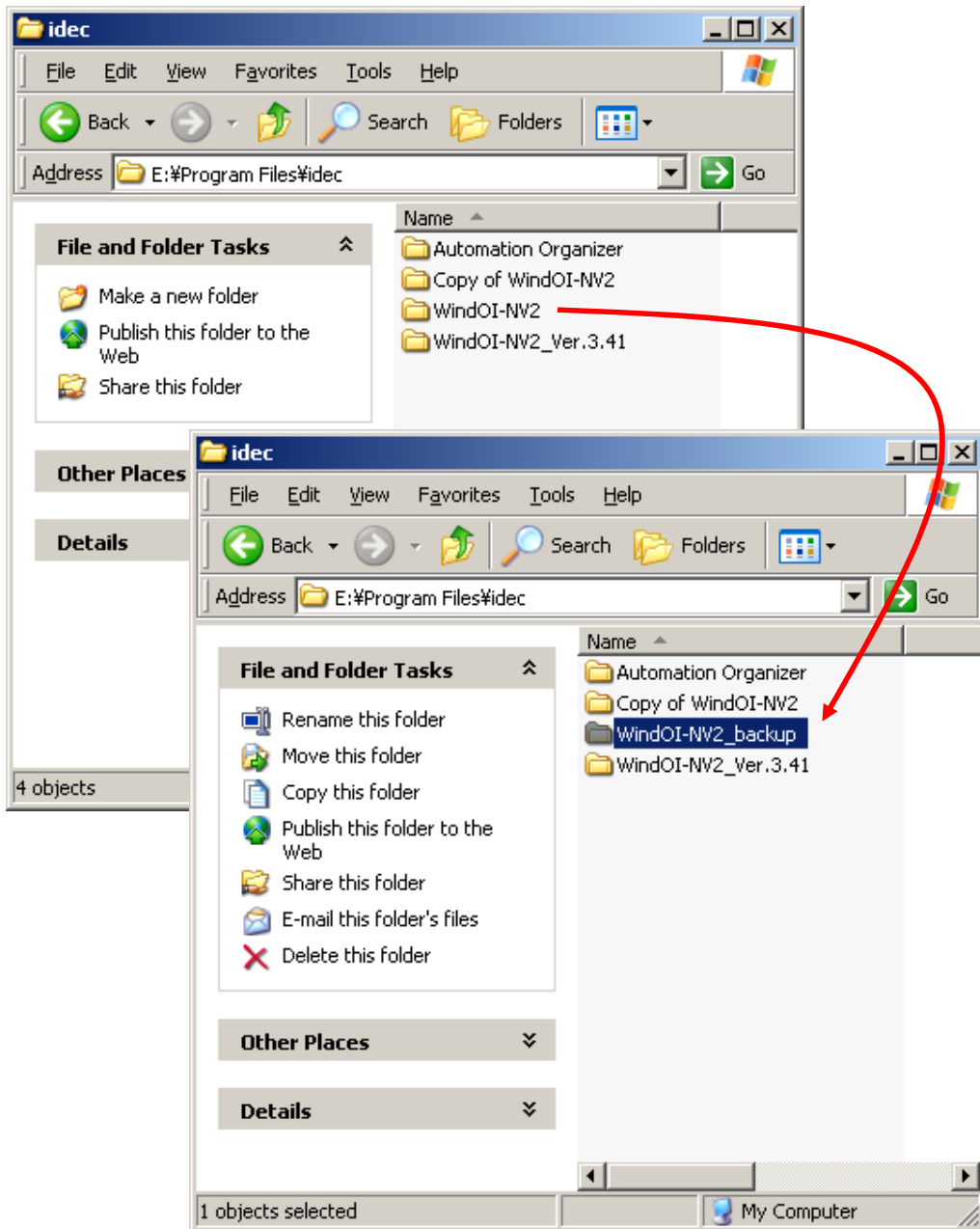
Step 3. In the “idec” folder, copy “WindOI-NV2” folder and paste it at same “idec” folder (you have the option to paste it to any folder of your choice).



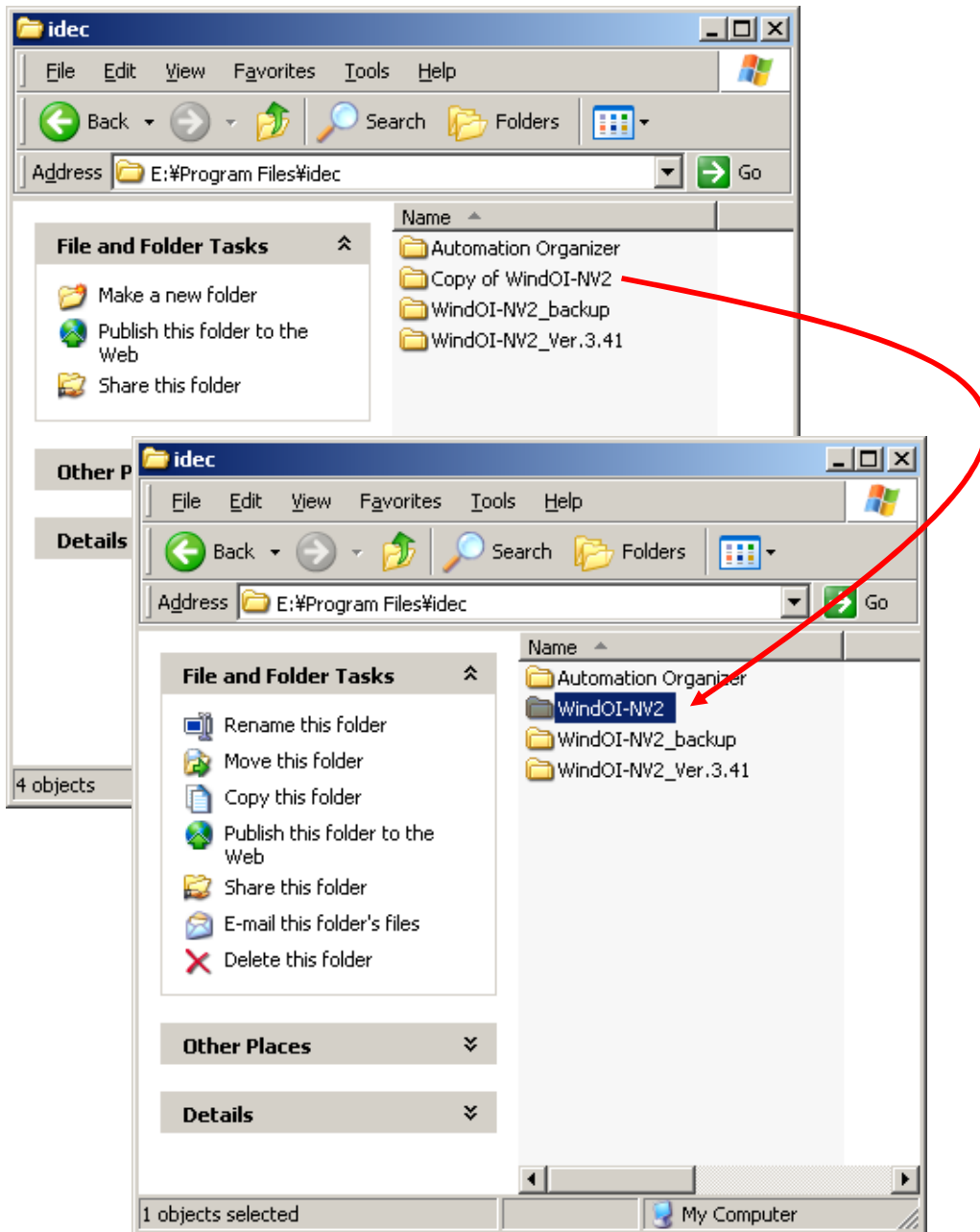
Step 4. Install Automation Organizer

Step 5. Change “WindOI-NV2” folder name or delete it.

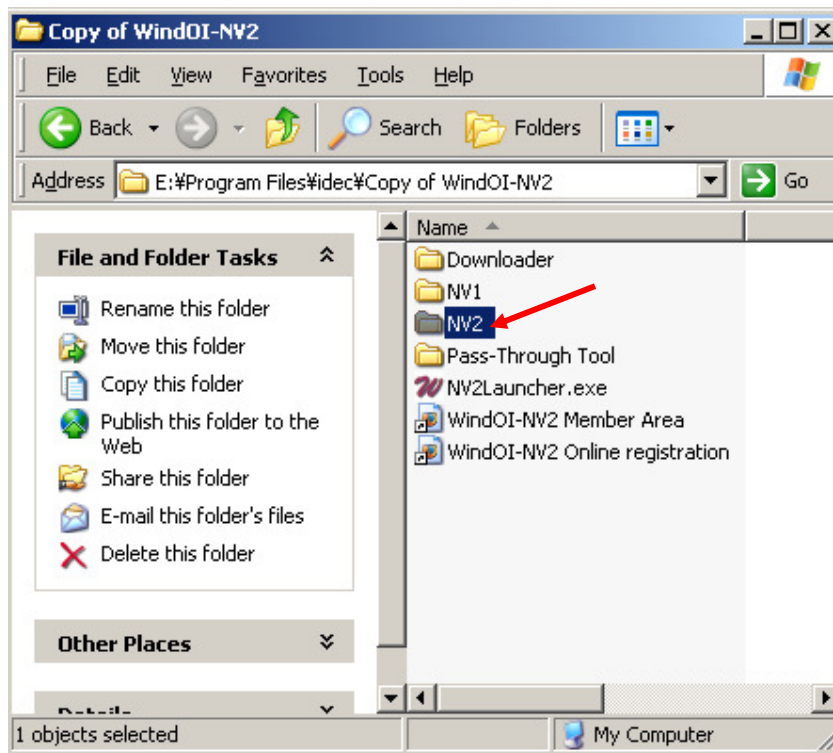
In the following example, the file name is changed to “WindOI-NV2_backup”.



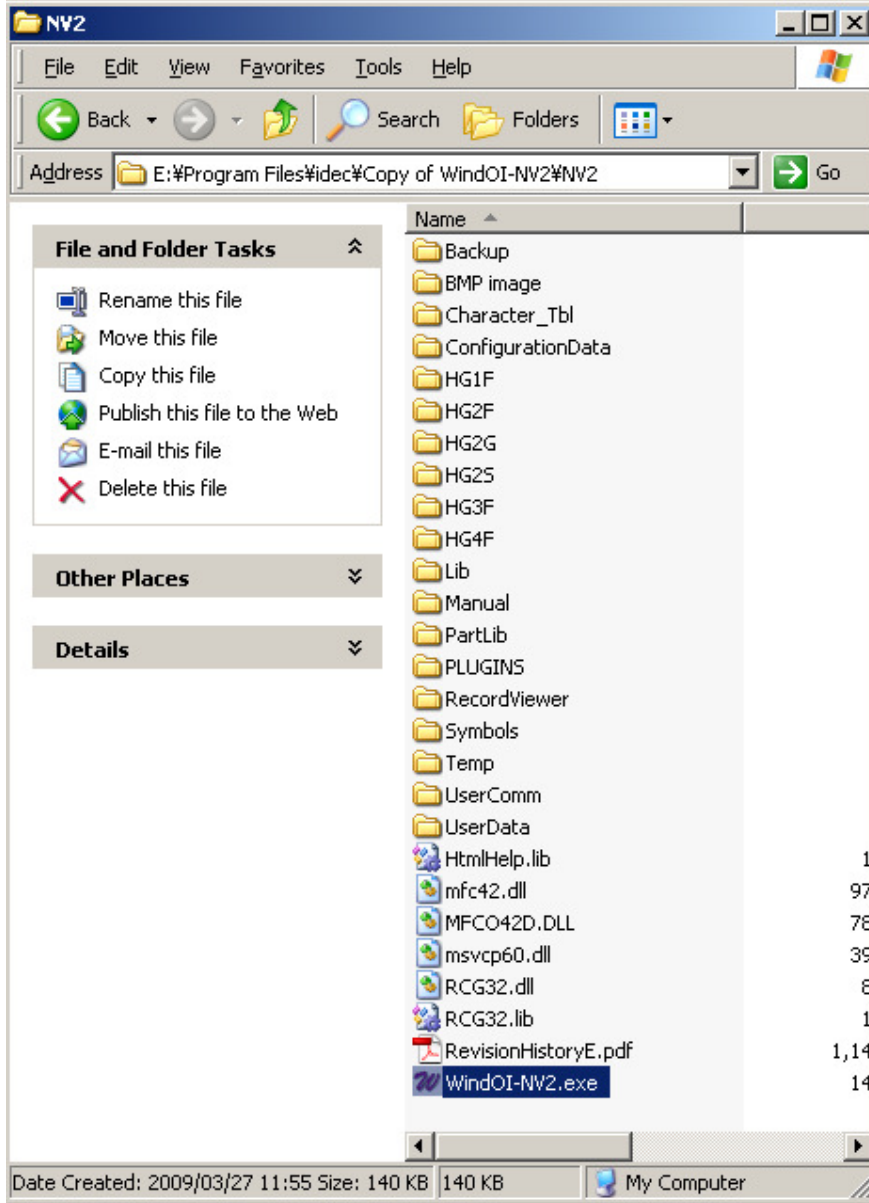
Step 6. Change the file name of “Copy of WindOI-NV2” to “WindOI-NV2”.



Step 7. Go into the **copied folder** “WindOI-NV2” and into the “NV2” folder.



Step 8. If you double click “WindOI-NV2.exe”, the software will launch.



Optional: If you want to put a short-cut icon for WindO/I-NV2, then Right Click on “WindOI-NV2.exe” and drag it to your desk top, then release right mouse button and select “Create Short Cut”.