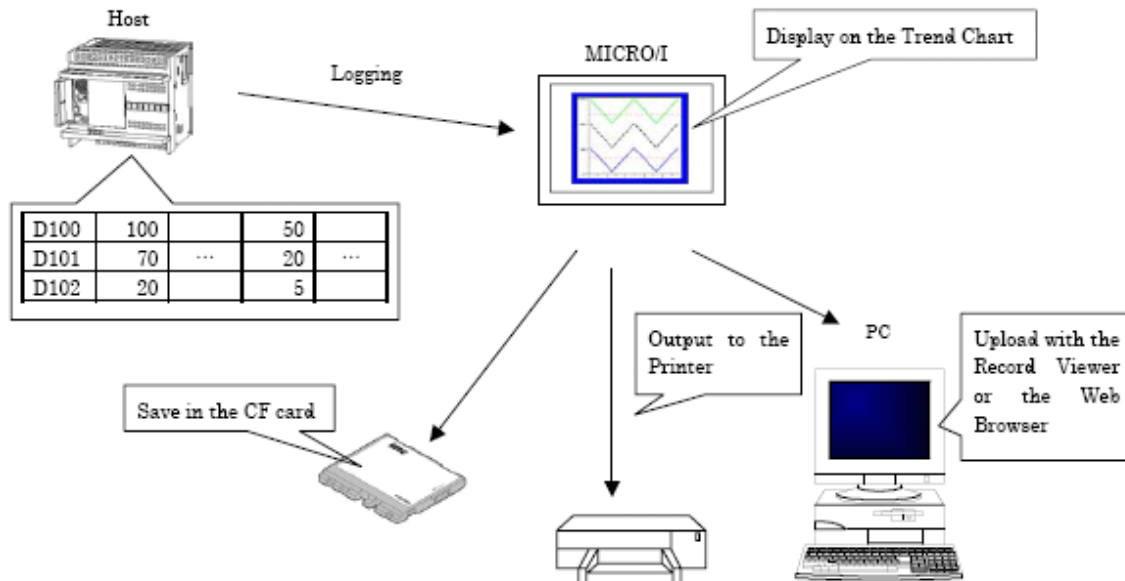


## TREND CHART

This program provides a step by step process on how to configure a simple Trend Chart. The data in the specified device is sampled and stored as a log data by using the Logging Settings. The maximum number of channels can be displayed per Trend Chart is 20.

Herewith, are other functionalities associated with the Trend Chart:

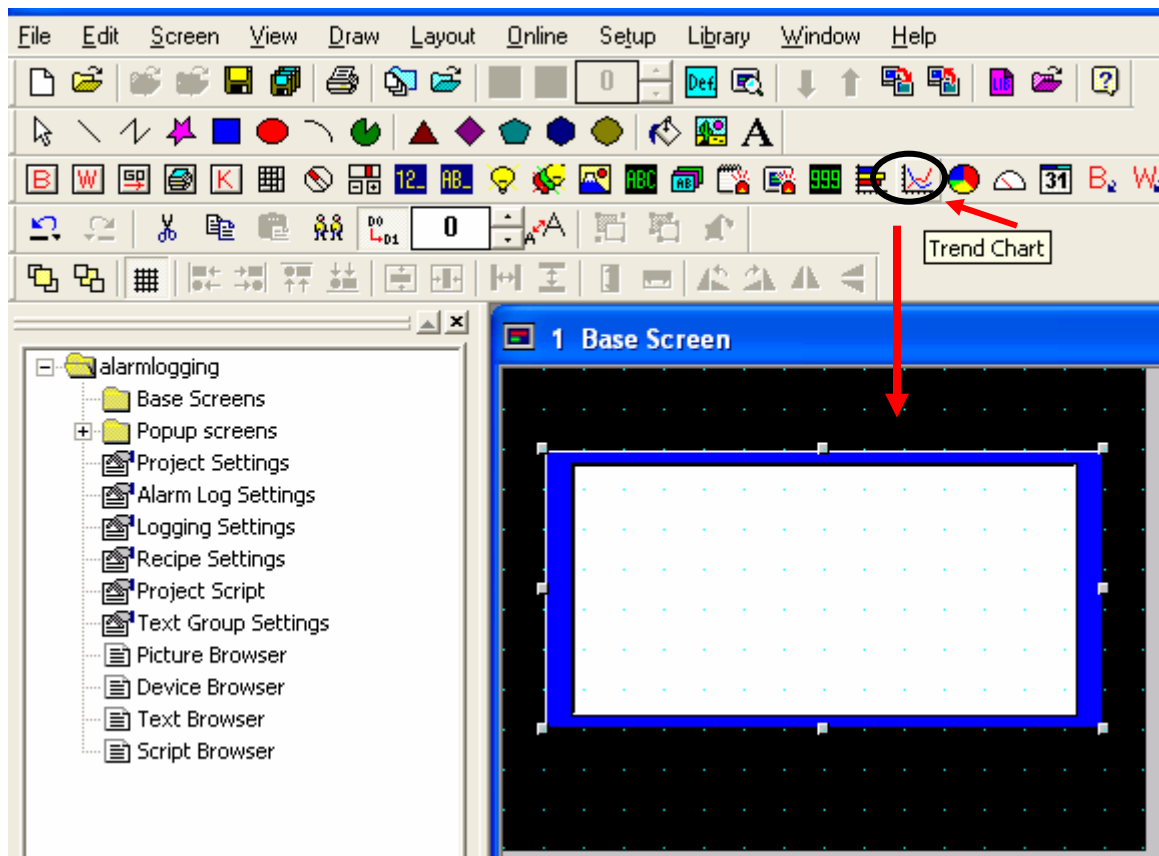


The following items are used in this example:

1. Part: Trend Chart
2. D 100 = log data are stored in the PLC

WindO/I-NV2 SOFTWARE:

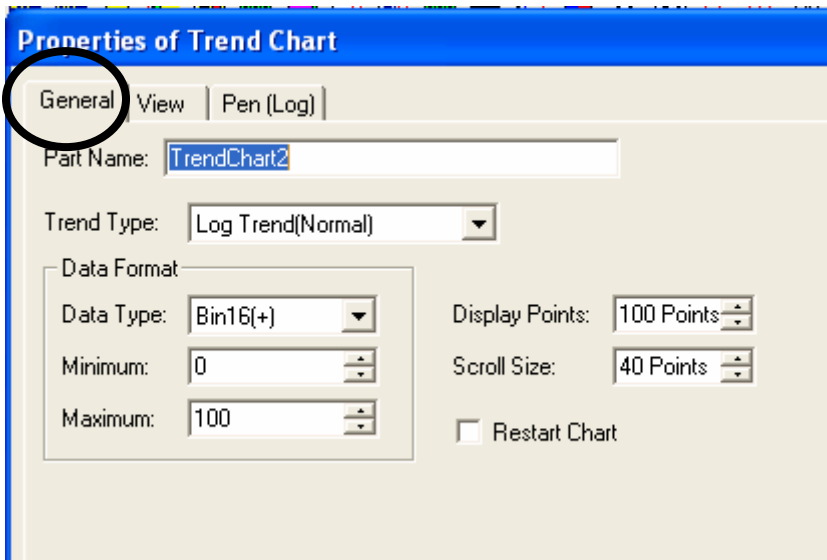
1. Select the Trend Chart and drop it on the screen.



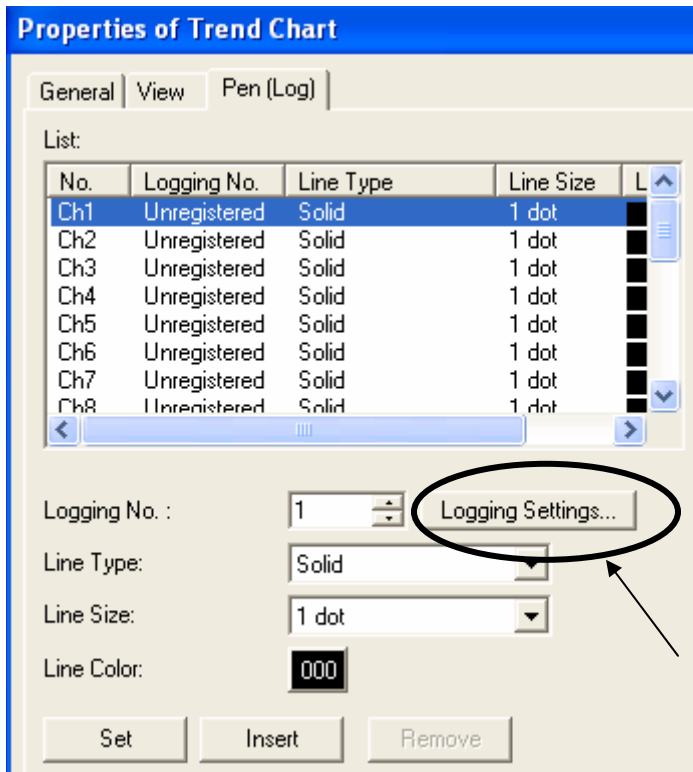
2. To configure, double click on the Trend Chart to see the properties.

General tab:

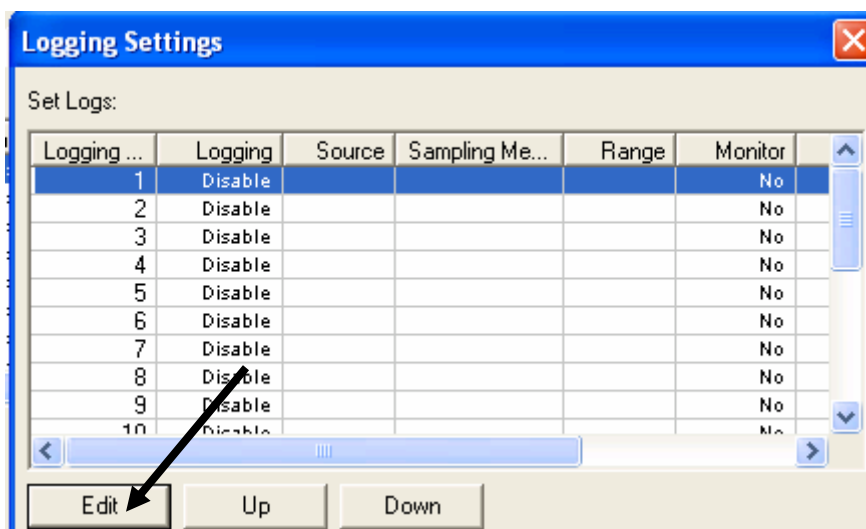
- For Trend type select Log Trend (Normal).  
(Data is displayed for each sample. When all points are displayed, the data scrolls to the left)
- Data Type: Bin16+ (The value will range from 0-65535)
- Set your minimum at 0 (Set the minimum value to displayed)
- Set you maximum at 100 (Set the maximum value to displayed)
- Display points : 100 (Set maximum displayed points on the screen)
- Scroll Size is 40



3. Select the Pen(Log) tab.  
Click on the Logging Settings to configure Channel 1.



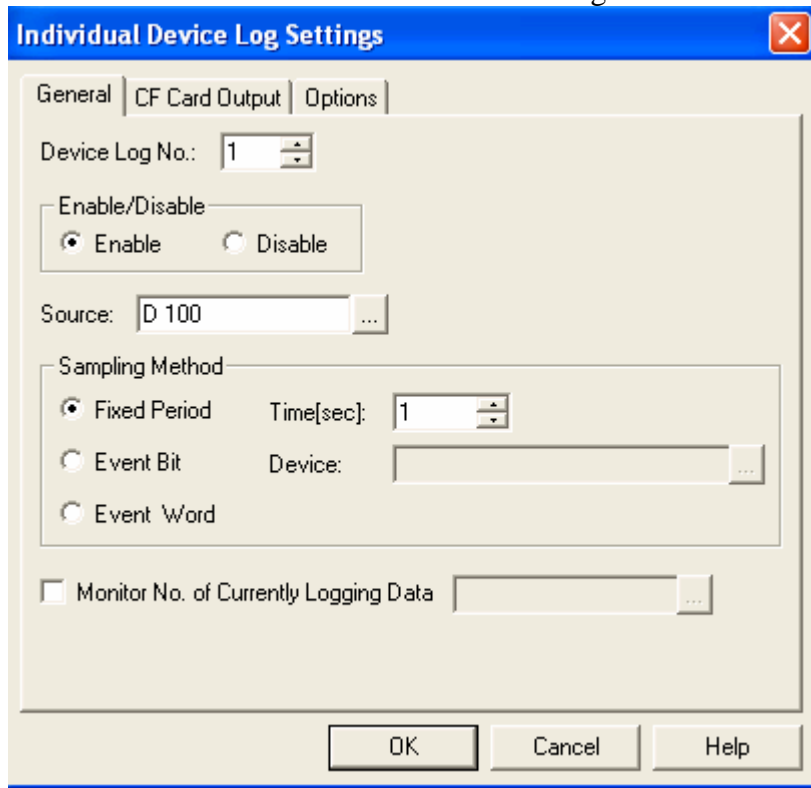
In the Logging Settings, click on the Edit button below.



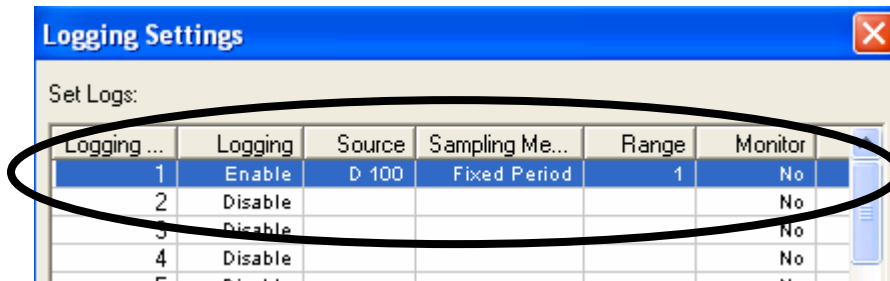
Individual Device Log Settings:

General tab:

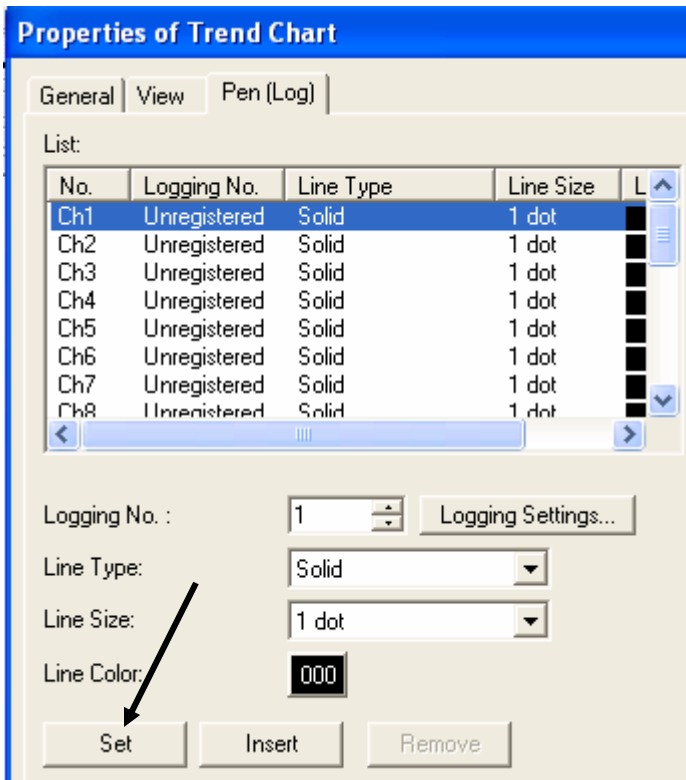
1. Device Log No. select "1" (reading one Source Device).
2. Select Enable to use the Device Log
3. Source: D100 (reading the data from)
4. Sampling Method, the choice is Fixed Period for 1 second (every 1 second, it will plot the data)
10. Click on the OK button to close the dialog box.



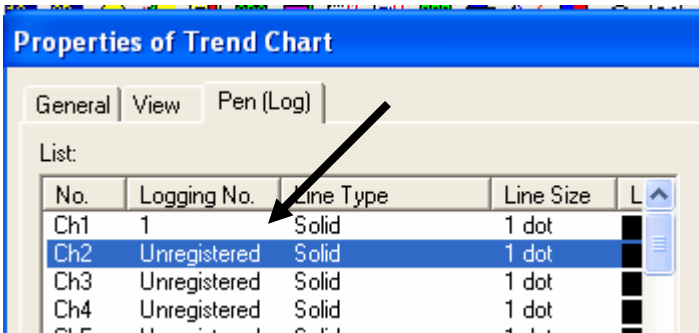
11. Logging Settings: The summary is shown in Logging 1. Now, click the OK button to continue.



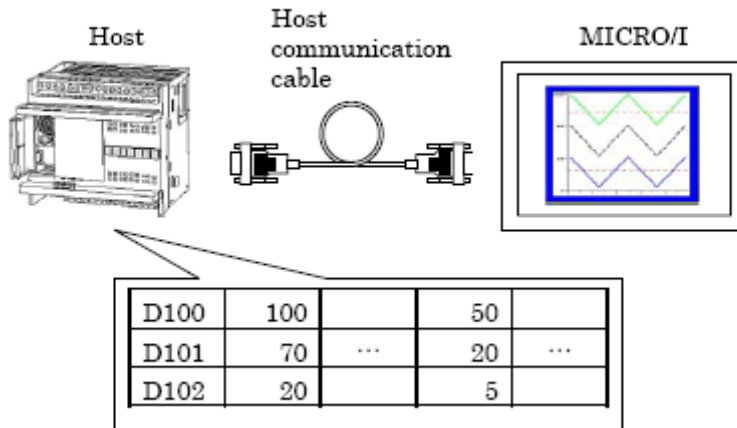
12. You have returned to the Properties of Trend Chart. In this category, select the Set button to register the configuration.



13. Now that Channel 1 is set, click on the OK button to close the Properties of Trend Chart.



14. You may now test the program.



In WindLDR software (make sure the PLC is connected to the PC) select Online-Monitor-Online-Point Write.

In the box, enter Data Register D100 and a value of 100 then D101 enter 70, and etc. You will see the data logged in the chart.

