

HG1X-222/422/822 to AB SLC 505 / 503 Cable pin details

HG1X End DB9 Male	AB SLC PLC End DB9 Female
Pin no. 2 (TXD)	Pin no. 2 (RXD)
Pin no. 3 (RXD)	Pin no. 3 (TXD)
Pin no. 5 (GND)	Pin no. 5 (GND)
-	Short Pins 7&8

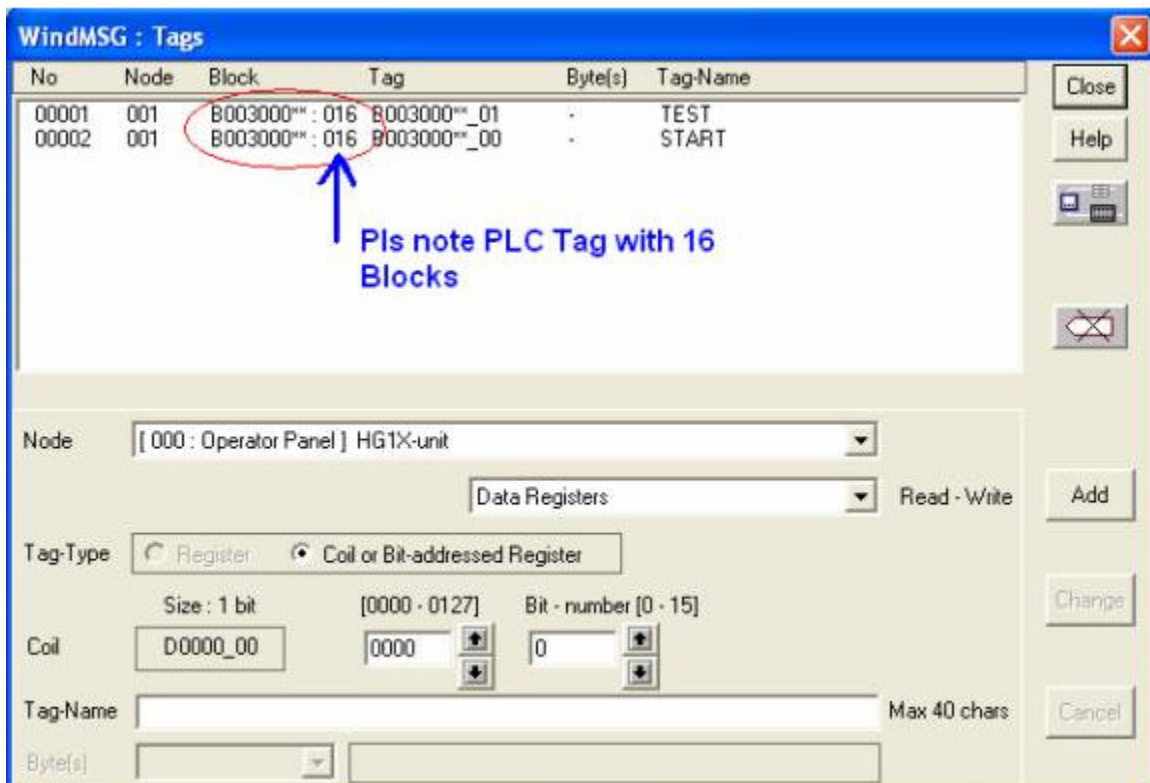
Default AB DF1 Driver (Ver.27.00) Communication parameters are 9600,NONE,8,1

In WindMSG Software:

1. Create only 1 screen and reading a Bit status to test communication.

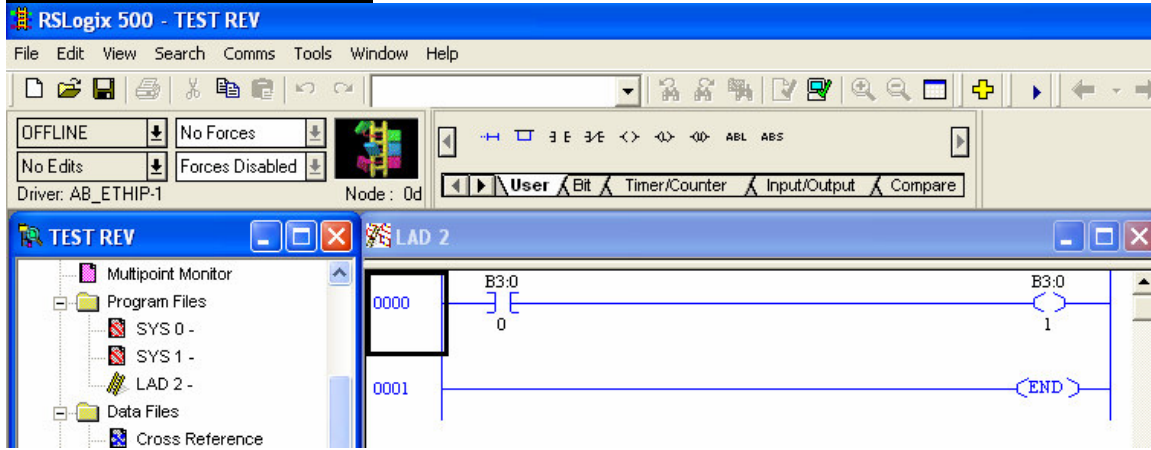
2. Under Tags:

As WindMSG software create AB PLC tag with 16 Blocks so it is necessary to define minimum length 16 (for each PLC Tag, which you want READ or WRITE from HG1X) in the PLC ladder



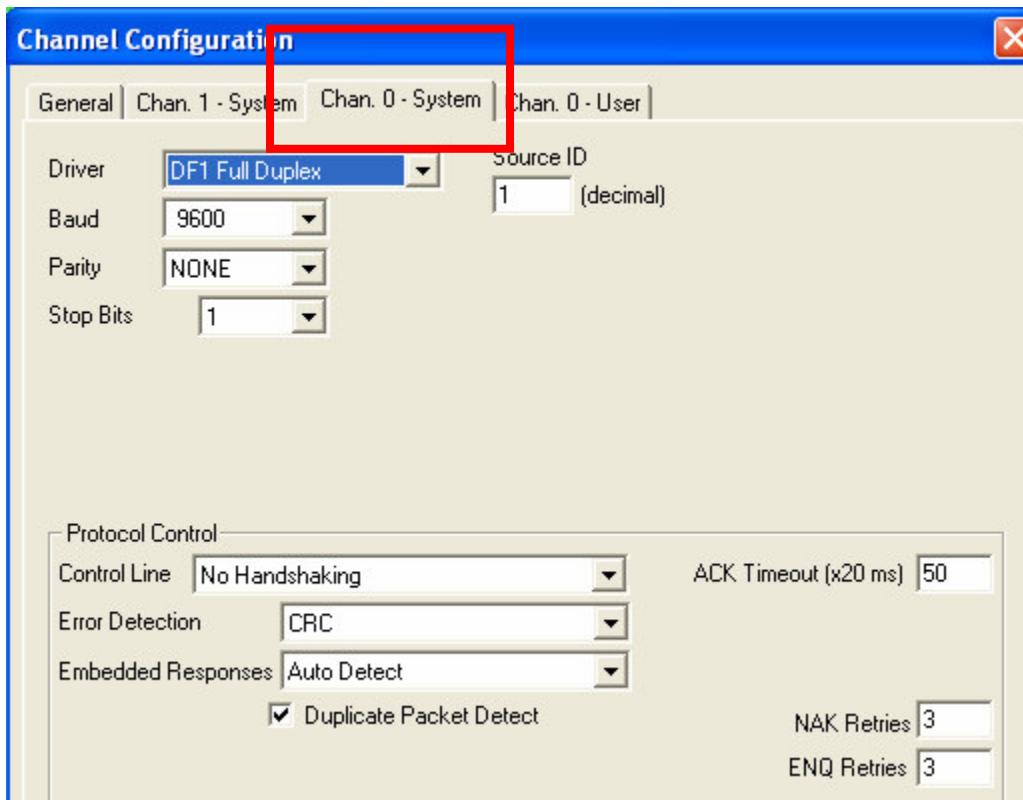
Configuration in AB Software, RSLOGIX

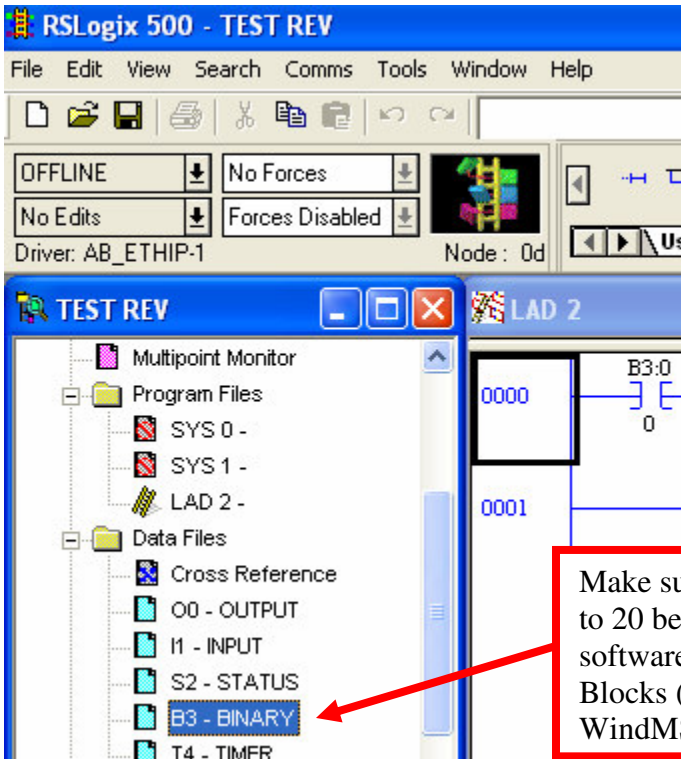
1. Example PLC Ladder:



2. Channel Configuration:

Follow all settings below:





Make sure to set the range from 1 to 20 because in WindMSG software the B3 is set to 16 Blocks (see explanation in WindMSG above).