

Corporate Data

**Corporate Name:** IDEC CORPORATION  
**Incorporated:** March 26, 1947  
**Capital Stock:** ¥10,056,605,173  
**Employees:** 1,932 (consolidated, as of March 31, 2011)  
 Excluding contract and temporary employees  
**Stock Listings:** Tokyo Stock Exchange, First Section Osaka Securities Exchange, First Section  
**Head Office:** 1-7-31 Nishi-Miyahara, Yodogawa-ku, Osaka 532-8550 Japan  
 Phone: +81-6-6398-2500  
**Tokyo Head Office:** 4-1-8 Konan, Minato-ku, Tokyo 108-0075 Japan  
 Phone: +81-3-5782-7690  
**Technology Research Center:** IDEC Technology Research Center  
**Sales Office:** IDEC SALES OFFICE  
**Office:** Osaka  
**Plants:** Tsukuba, Kyoto, Fukusaki, Takino  
**Sales Branches:** Sapporo, Sendai, Takasaki, Utsunomiya, Omiya, Mito, Tokyo, Tama, Yokohama, Mishima, Matsumoto, Niigata, Toyama, Kanazawa, Hamamatsu, Toyota, Nagoya, Kyoto, Osaka, Kobe, Okayama, Fukuyama, Hiroshima, Shikoku, Kitakyushu, Fukuoka, Kumamoto

**Distribution Centers:** Hamamatsu, Tatsuno



Origin of our name

The history of the IDEC Group began in November 1945, shortly after World War II, with the founding of Izumi Shokai in a corner of Doshomachi in Osaka. It was engaged in the retail and wholesale of electrical appliances. Our former company name, IZUMI\*, reflects the wish at our founding to gather people's power through a sense of togetherness and to build a company that grows with a stream of great ideas as if it were a fountain that never runs dry. (\* IZUMI consists of two Chinese characters: 和 (Wa), literally meaning "togetherness", and 泉 (Izumi), literally meaning "fountain".) In November 2005, the Group reached a milestone with the 60th anniversary of its foundation. Aiming to become a truly global corporation that thinks automation and beyond, it changed its name from IZUMI to IDEC. But the wish the Company had at its founding lives on, unchanged.



Corporate History

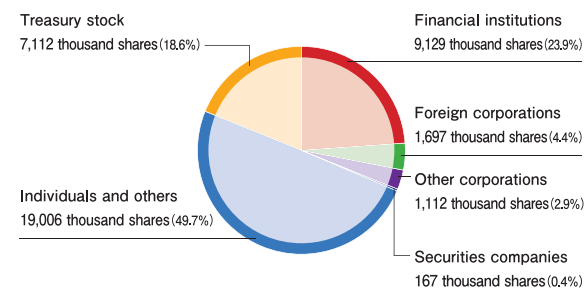
- 1945** Founded Izumi Shokai. Began retail and wholesale of electrical equipment and devices.
- 1947** Incorporated Izumi Denki Co., Ltd. (Chuo-ku, Osaka). Began manufacture and sale of switches.
- 1956** Moved the Head Office to Kita-ku, Osaka. Opened and began operations of the Osaka Office in Yodogawa-ku, Osaka.
- 1958** Began manufacturing and selling industrial switches, pilot lights, and terminal blocks.
- 1969** Opened and began operations of the Kyoto Office in Nagaokakyo City, Kyoto. Moved the Head Office to Yodogawa-ku, Osaka.
- 1974** Incorporated IDEC Izumi Toyama Manufacturing Co., Ltd. (Toyama).
- 1982** Created a new corporate identity and "IDEC" trademark. Changed the English corporate name. Listed stock in the Second Section of the Osaka Securities Exchange.
- 1984** Opened and began operations of the Fukusaki Plant in Kanzaki-gun, Hyogo Prefecture. Moved the Head Office to a new location in Yodogawa-ku, Osaka.
- 1989** Listed stock in the Second Section of the Tokyo Stock Exchange. Completed the first phase of construction at the Takino Plant (Kato City, Hyogo Prefecture).
- 1990** Stock listing upgraded from the Second Section to the First Section of the Tokyo and Osaka Stock Exchanges.
- 1991** Completed the first phase of construction at the Tsukuba Plant (Ryugasaki City, Ibaraki Prefecture). Merged Toyama Manufacturing Co., Ltd. into IDEC Izumi Corporation. Qualified as a loan transaction stock on the Osaka Securities Exchange.
- 1992** Opened IDEC Technology Research Center in Yodogawa-ku, Osaka. Completed the second phase of construction at the Takino Plant (Kato City, Hyogo Prefecture).
- 1994** Opened and began operations of the Hamamatsu Distribution Center (Hamamatsu City, Shizuoka Prefecture). Qualified as a loan transaction stock on the Tokyo Stock Exchange. Moved the Head Office to a new location in Yodogawa-ku, Osaka. Five offices and two subsidiaries acquired ISO 9000 series certification.
- 1995** Opened the Harima Plant in Kanzaki-gun, Hyogo Prefecture.
- 1997** Five sites acquired ISO14001 certification for their environment management systems.
- 1998** Opened and began operations of the Tatsuno Distribution Center (Tatsuno City, Hyogo Prefecture). Opened the Tokyo Head Office (Minato-ku, Tokyo) and moved the Tokyo Office to the Tokyo Head Office.
- 2000** Began full-scale operations of a new production system (robot-controlled cell production system).
- 2004** Reduced the number of shares comprising the minimum stock trading unit.
- 2005** Changed the names and symbol marks of IDEC Group companies in Japan.
- 2008** Opened the IDEC SALES OFFICE (Yodogawa-ku, Osaka).
- 2010** Opened the Osaka Office (Yodogawa-ku, Osaka).

Shares of the Company

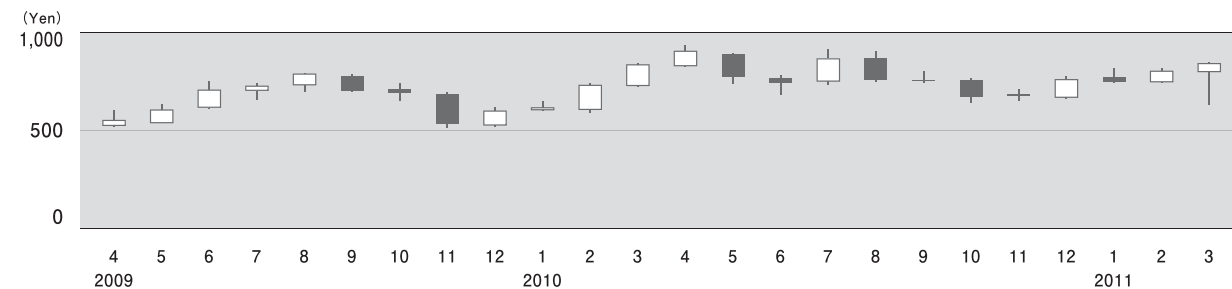
**Number of shares authorized** 150,000,000  
**Number of shares issued** 38,224,485  
**Number of shareholders at year-end** 11,653

Note: Treasury stock held at the end of the period totaled 7,112,827 shares, representing changes in amounts in response to shareholders' requests for sales or additional purchases.

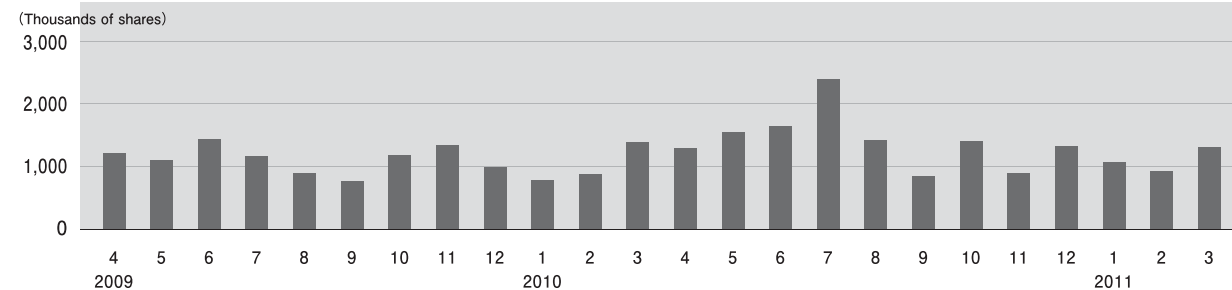
Distribution of Shareholders



Share Price



Trading Volume



Major Shareholders (Top 10)

Shareholders	Number of shares (Thousands of shares)	Holdings (%)
Japan Trustee Services Bank, Ltd.	2,515	6.58
The Master Trust Bank of Japan, Ltd.	1,608	4.21
Mizuho Bank, Ltd.	1,312	3.43
The Bank of Tokyo-Mitsubishi UFJ, Ltd.	1,124	2.94
Nippon Life Insurance Company	1,029	2.69
Toshiyuki Funaki	838	2.19
Trust & Custody Services Bank, Ltd.	811	2.13
Keijiro Fujita	773	2.03
Mikio Funaki	625	1.64
Tsuneo Funaki	607	1.59

Note: The description of major shareholders above conforms to the content disclosed in the Annual Securities Report.